

CoraLite® Plus 488-conjugated Kininogen 1 Monoclonal antibody

Catalog Number: **CL488-66123**

Basic Information

Catalog Number: CL488-66123	GenBank Accession Number: BC060039	Purification Method: Protein G purification
Size: 1000 µg/ml	GeneID (NCBI): 3827	CloneNo.: 10E8D11
Source: Mouse	UNIPROT ID: P01042	Recommended Dilutions: IF/ICC 1:50-1:500
Isotype: IgG1	Full Name: kininogen 1	Excitation/Emission maxima wavelengths: 493 nm / 522 nm
Immunogen Catalog Number: AG19233	Calculated MW: 644 aa, 72 kDa	

Applications

Tested Applications: IF/ICC	Positive Controls: IF/ICC : HeLa cells,
Species Specificity: human	

Background Information

Kininogens are inhibitors of thiol proteases. Kininogen 1 plays important role in Kinin-kallikrein system. This gene is translated into High-molecular weight kininogen (HMWK) and low-molecular weight kininogen (LMWK) after alternative splicing. HMWK is produced by the liver together with prekallikrein. It acts mainly as a cofactor on coagulation and inflammation, and has no intrinsic catalytic activity. LMWK is produced locally by numerous tissues, and secreted together with tissue kallikrein.

Storage

Storage:
Store at -20°C. Avoid exposure to light. Stable for one year after shipment.
Storage Buffer:
PBS with 50% Glycerol, 0.05% Proclin300, 0.5% BSA, pH 7.3.
Aliquoting is unnecessary for -20°C storage

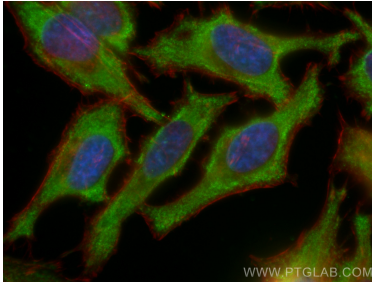
For technical support and original validation data for this product please contact:

T: 4006900926

E: Proteintech-CN@ptglab.comW: ptgcn.com

This product is exclusively available under Proteintech Group brand and is not available to purchase from any other manufacturer.

Selected Validation Data



Immunofluorescent analysis of (-20°C Ethanol)
fixed HeLa cells using CoraLite® Plus 488
Kininogen 1 antibody (CL488-66123, Clone:
10E8D11) at dilution of 1:200, CL594-Phalloidin
(red).