

For Research Use Only



# CoraLite® Plus 488-conjugated Alpha Galactosidase A Monoclonal antibody

Catalog Number: **CL488-66121**

Featured Product

## Basic Information

Catalog Number: CL488-66121	GenBank Accession Number: BC002689	Purification Method: Protein A purification
Size: 1000 µg/ml	GeneID (NCBI): 2717	CloneNo.: 2B2C5
Source: Mouse	UNIPROT ID: P06280	Recommended Dilutions: IF/ICC 1:50-1:500
Isotype: IgG2a	Full Name: galactosidase, alpha	Excitation/Emission maxima wavelengths: 493 nm / 522 nm
Immunogen Catalog Number: AG7505	Calculated MW: 49 kDa	
	Observed MW: 49 kDa	

## Applications

Tested Applications: IF/ICC	Positive Controls: IF/ICC : HepG2 cells,
Species Specificity: human	

## Background Information

GLA, also named as Melibiase and Alpha-galactosidase A, belongs to the glycosyl hydrolase 27 family. It hydrolyzes terminal, non-reducing alpha-D-galactose residues in alpha-D-galactosides, including galactose oligosaccharides, galactomannans and galactolipids. Fabry disease is an X-linked lysosomal storage disorder resulting from the deficient activity of GLA. Enzyme replacement therapy (ERT) with GLA is currently the most effective therapeutic strategy for patients with Fabry disease, a lysosomal storage disease.

## Storage

**Storage:**  
Store at -20°C. Avoid exposure to light. Stable for one year after shipment.  
**Storage Buffer:**  
PBS with 50% Glycerol, 0.05% Proclin300, 0.5% BSA, pH 7.3.  
Aliquoting is unnecessary for -20°C storage

For technical support and original validation data for this product please contact:

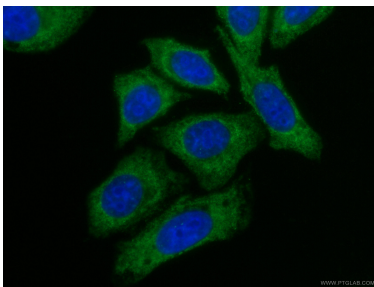
T: 4006900926

E: [Proteintech-CN@ptglab.com](mailto:Proteintech-CN@ptglab.com)

W: [ptgcn.com](http://ptgcn.com)

This product is exclusively available under Proteintech Group brand and is not available to purchase from any other manufacturer.

## Selected Validation Data



Immunofluorescent analysis of (-20°C Ethanol) fixed HepG2 cells using CL488-66121 (Alpha galactosidase A antibody) at dilution of 1:100.