

For Research Use Only

CoraLite® Plus 488-conjugated SULT4A1 Monoclonal antibody

Catalog Number: CL488-66106



Basic Information

Catalog Number:

CL488-66106

Source:

Mouse

Isotype:

IgG1

Immunogen Catalog Number:

AG17962

GenBank Accession Number:

BC022459

GeneID (NCBI):

25830

UNIPROT ID:

Q9BR01

Full Name:

sulfotransferase family 4A, member 1

Calculated MW:

284 aa, 33 kDa

Observed MW:

33 kDa

Purification Method:

Protein G purification

CloneNo.:

1B9F6

Recommended Dilutions:

IF-P: 1:50-1:500

FC (Intra): 0.40 ug per 10⁶ cells in a 100 µl suspension

Excitation/Emission maxima wavelengths:

493 nm / 522 nm

Applications

Tested Applications:

IF-P, FC (Intra)

Species Specificity:

human, mouse

Positive Controls:

IF-P: mouse brain tissue,

FC (Intra): SH-SY5Y cells,

Background Information

SULT4A1, also named as SULTX3, NST, ST4A1, hBR-STL and hBR-STL-1, belongs to the sulfotransferase 1 family. It may catalyze the sulfate conjugation of many drugs, xenobiotic compounds, hormones, and neurotransmitters. SULT4A1 displays activity towards L-triiodothyronine, thyroxine, estrone, p-nitrophenol, 2-naphtylamine, and 2-naphtol. It may have a role in the sulfation of drugs and neurotransmitters in the CNS. SULT4A1 is a brain-specific sulfotransferase believed to be involved in the metabolism of neurotransmitters. It is a novel cytosolic sulfotransferase that is primarily expressed in the brain.

Storage

Storage:

Store at -20°C. Avoid exposure to light. Stable for one year after shipment.

Storage Buffer:

PBS with 50% glycerol, 0.05% Proclin300, 0.5% BSA, pH7.3

Aliquoting is unnecessary for -20°C storage

For technical support and original validation data for this product please contact:

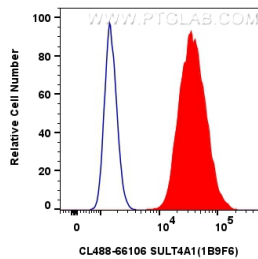
T: 4006900926

E: Proteintech-CN@ptglab.com

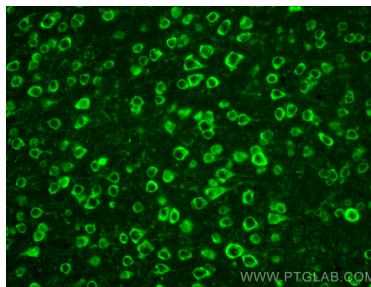
W: ptgcn.com

This product is exclusively available under Proteintech Group brand and is not available to purchase from any other manufacturer.

Selected Validation Data



1x10⁶ SH-SY5Y cells were intracellularly stained with 0.4 μ g Coralite® Plus 488 Sult4a1 Monoclonal Antibody (CL488-66106, Clone:1B9F6)(red), or 0.4 μ g Coralite® Plus 488 Mouse IgG1 Isotype Control (MOPC-21) (CL488-65124, Clone: MOPC-21) (blue). Cells were fixed with 4% PFA and permeabilized with Flow Cytometry Perm Buffer.



Immunofluorescent analysis of (4% PFA) fixed paraffin-embedded mouse brain tissue using Coralite® Plus 488 SULT4A1 antibody (CL488-66106, Clone: 1B9F6) at dilution of 1:200. Heat mediated antigen retrieval with Tris-EDTA buffer (pH 9.0).