

For Research Use Only

CoraLite® Plus 488-conjugated S100A6 Monoclonal antibody



Catalog Number: CL488-66098

Basic Information

Catalog Number:

CL488-66098

Size:

1000 µg/ml

Source:

Mouse

Isotype:

IgG1

Immunogen Catalog Number:

AG17606

GenBank Accession Number:

BC001431

GeneID (NCBI):

6277

UNIPROT ID:

P06703

Full Name:

S100 calcium binding protein A6

Calculated MW:

10 kDa

Observed MW:

10 kDa

Purification Method:

Protein G purification

CloneNo.:

3D11C8

Recommended Dilutions:

IF 1:50-1:500

Excitation/Emission maxima

wavelengths:

493 nm / 522 nm

Applications

Tested Applications:

IF/ICC

Species Specificity:

human

Positive Controls:

IF : HepG2 cells, SH-SY5Y cells

Background Information

S100A6 is also named as calcyclin, prolactin receptor-associated protein (PRA), growth factor-inducible protein 2A9 or MLN4. It belongs to S100 family of low molecular weight, acidic, calcium-binding proteins which contain two EF-hand calcium binding sites. S100A6 may function as a calcium sensor to activate several processes in the calcium signal transduction pathway of cell growth, proliferation, secretion and exocytosis.

Storage

Storage:

Store at -20°C. Avoid exposure to light. Stable for one year after shipment.

Storage Buffer:

PBS with 50% Glycerol, 0.05% Proclin300, 0.5% BSA, pH 7.3.

Aliquoting is unnecessary for -20°C storage

For technical support and original validation data for this product please contact:

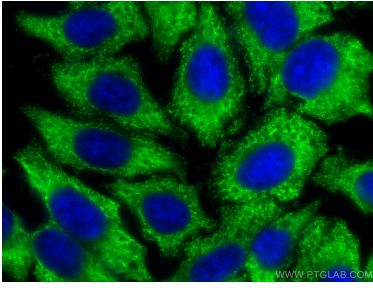
T: 4006900926

E: Proteintech-CN@ptglab.com

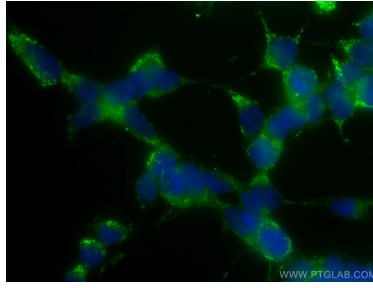
W: ptgcn.com

This product is exclusively available under Proteintech Group brand and is not available to purchase from any other manufacturer.

Selected Validation Data



Immunofluorescent analysis of (-20°C Ethanol) fixed HepG2 cells using CoraLite® Plus 488 S100A6 antibody (CL488-66098, Clone: 3D11C8) at dilution of 1:200.



Immunofluorescent analysis of (-20°C Ethanol) fixed SH-SY5Y cells using CoraLite® Plus 488 S100A6 antibody (CL488-66098, Clone: 3D11C8) at dilution of 1:200.