

For Research Use Only

# CoraLite® Plus 488-conjugated Fetuin-A/AHSG Monoclonal antibody

Catalog Number: CL488-66094



## Basic Information

Catalog Number:

CL488-66094

Size:

1000 ug/ml

Source:

Mouse

Isotype:

IgG2a

Immunogen Catalog Number:

AG10073

GenBank Accession Number:

BC048198

GeneID (NCBI):

197

UNIPROT ID:

P02765

Full Name:

alpha-2-HS-glycoprotein

Calculated MW:

367 aa, 39 kDa

Observed MW:

58 kDa

Purification Method:

Protein A purification

CloneNo.:

1F6B9

Recommended Dilutions:

IF/ICC 1:50-1:500

Excitation/Emission maxima wavelengths:

493 nm / 522 nm

## Applications

Tested Applications:

IF/ICC, FC (Intra)

Species Specificity:

human

Positive Controls:

IF/ICC : HepG2 cells,

## Background Information

Fetuin-A (alpha-2-HS-glycoprotein, AHSG), a liver borne plasma protein, contributes to the prevention of soft tissue calcification, modulates inflammation, reduces INS sensitivity and fosters weight gain following high fat diet or ageing. It is involved in several functions, such as endocytosis, brain development and the formation of bone tissue. The protein is commonly present in the cortical plate of the immature cerebral cortex and bone marrow hemopoietic matrix, and it has therefore been postulated that it participates in the development of the tissues.

## Storage

Storage:

Store at -20°C. Avoid exposure to light. Stable for one year after shipment.

Storage Buffer:

PBS with 50% Glycerol, 0.05% Proclin300, 0.5% BSA, pH 7.3.

Aliquoting is unnecessary for -20°C storage

For technical support and original validation data for this product please contact:

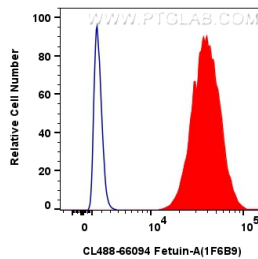
T: 4006900926

E: [Proteintech-CN@ptglab.com](mailto:Proteintech-CN@ptglab.com)

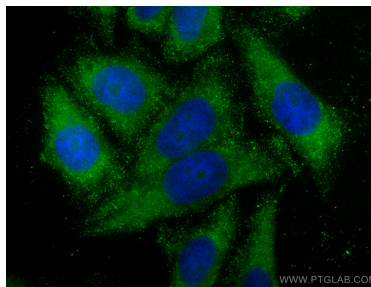
W: [ptgcn.com](http://ptgcn.com)

This product is exclusively available under Proteintech Group brand and is not available to purchase from any other manufacturer.

## Selected Validation Data



1x10<sup>6</sup> HepG2 cells were intracellularly stained with 0.8 ug CoraLite® Plus 488 Anti-Human Fetuin-A (CL488-66094, Clone:1F6B9)(red), or 0.8 ug CoraLite® Plus 488 Mouse IgG2a Isotype Control (C1.18.4) (CL488-65208, Clone: C1.18.4) (blue). Cells were fixed with 4% PFA and permeabilized with Flow Cytometry Perm Buffer (PF00011-C).



Immunofluorescent analysis of (-20°C Ethanol) fixed HepG2 cells using CoraLite® Plus 488 Fetuin-A antibody (CL488-66094, Clone: 1F6B9 ) at dilution of 1:200.