

For Research Use Only

# CoraLite® Plus 488-conjugated APOH Monoclonal antibody

Catalog Number: CL488-66074



## Basic Information

<b>Catalog Number:</b> CL488-66074	<b>GenBank Accession Number:</b> BC026283	<b>Purification Method:</b> Protein G purification
<b>Size:</b> 1000 ug/ml	<b>GeneID (NCBI):</b> 350	<b>CloneNo.:</b> 4D9A4
<b>Source:</b> Mouse	<b>UNIPROT ID:</b> P02749	<b>Recommended Dilutions:</b> IF-P 1:50-1:500 IF/ICC 1:50-1:500
<b>Isotype:</b> IgG1	<b>Full Name:</b> apolipoprotein H (beta-2-glycoprotein I)	<b>Excitation/Emission maxima wavelengths:</b> 493 nm / 522 nm
<b>Immunogen Catalog Number:</b> AG17915	<b>Calculated MW:</b> 345 aa, 38 kDa	
	<b>Observed MW:</b> 50-53 kDa	

## Applications

<b>Tested Applications:</b> IF/ICC, IF-P	<b>Positive Controls:</b>
<b>Species Specificity:</b> human, mouse, rat, pig	IF-P : human liver cancer tissue, IF/ICC : HepG2 cells,

## Background Information

Apolipoprotein H (ApoH), also known as beta2-glycoprotein I (B2-GPI), is a plasma glycoprotein, primarily synthesized in the liver. It has an important function in blood coagulation and clearance of apoptotic bodies from the circulation. ApoH is also an important actor of host innate immune response through its capacity to bind with high affinity to a large panel of pathogens or their proteins.

## Storage

**Storage:**  
Store at -20°C. Avoid exposure to light. Stable for one year after shipment.  
**Storage Buffer:**  
PBS with 50% Glycerol, 0.05% Proclin300, 0.5% BSA, pH 7.3.  
Aliquoting is unnecessary for -20°C storage

For technical support and original validation data for this product please contact:

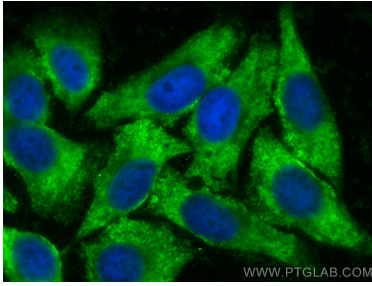
T: 4006900926

E: [Proteintech-CN@ptglab.com](mailto:Proteintech-CN@ptglab.com)

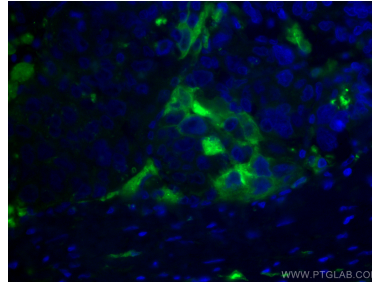
W: [ptgcn.com](http://ptgcn.com)

This product is exclusively available under Proteintech Group brand and is not available to purchase from any other manufacturer.

## Selected Validation Data



Immunofluorescent analysis of (-20°C Ethanol) fixed HepG2 cells using CoraLite® Plus 488 Apolipoprotein H antibody (CL488-66074, Clone: 4D9A4) at dilution of 1:200.



Immunofluorescent analysis of (4% PFA) fixed human liver cancer tissue using CoraLite® Plus 488 Apolipoprotein H antibody (CL488-66074, Clone: 4D9A4) at dilution of 1:200.