

For Research Use Only

CoraLite® Plus 488-conjugated Integrin Alpha 3 Monoclonal antibody



Catalog Number:CL488-66070

Featured Product

Basic Information

Catalog Number:

CL488-66070

Size:

1000 µg/ml

Source:

Mouse

Isotype:

IgG2a

Immunogen Catalog Number:

AG17293

GenBank Accession Number:

BC150190

GeneID (NCBI):

3675

UNIPROT ID:

P26006

Full Name:

integrin, alpha 3 (antigen CD49C, alpha 3 subunit of VLA-3 receptor)

Calculated MW:

1066 aa, 119 kDa

Observed MW:

120-140 kDa

Purification Method:

Protein A purification

CloneNo.:

3F9G4

Recommended Dilutions:

WB 1:500-1:1000

Excitation/Emission maxima wavelengths:

493 nm / 522 nm

Applications

Tested Applications:

WB

Species Specificity:

human, pig, mouse

Positive Controls:

WB : A549 cells, PC-3 cells

Background Information

ITGA3, also named as MSK18, CD49c, GAPB3 and FRP-2, belongs to the integrin alpha chain family. It is a receptor for fibronectin, laminin, collagen, epiligrin, thrombospondin and CSPG4. ITGA3 may mediate with LGALS3 the stimulation by CSPG4 of endothelial cells migration. ITGA3 is highly concentrated in epithelial cells where it strongly adheres to Laminin-5 and Laminin-5 induced rapid adhesion can be blocked by antibodies against the alpha-3 integrin subunit. It can be cleaved into heavy chain(840aa) and light chain(176aa). This antibody can recognize the heavy chain.

Storage

Storage:

Store at -20°C. Avoid exposure to light. Stable for one year after shipment.

Storage Buffer:

PBS with 50% Glycerol, 0.05% Proclin300, 0.5% BSA, pH 7.3.

Aliquoting is unnecessary for -20°C storage

For technical support and original validation data for this product please contact:

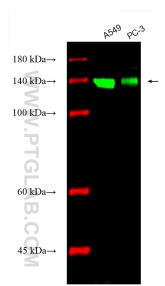
T: 4006900926

E: Proteintech-CN@ptglab.com

W: ptgcn.com

This product is exclusively available under Proteintech Group brand and is not available to purchase from any other manufacturer.

Selected Validation Data



Various lysates were subjected to SDS PAGE followed by western blot with CL488-66070 (Integrin Alpha 3 antibody) at dilution of 1:500 incubated at room temperature for 1.5 hours.