

CoraLite® Plus 488-conjugated Serpine C1/Antithrombin III Monoclonal antibody

Catalog Number: **CL488-66052**

Basic Information

Catalog Number: CL488-66052	GenBank Accession Number: BC022309	Purification Method: Protein G purification
Size: 1000 µg/ml	GeneID (NCBI): 462	CloneNo.: 2B2E5
Source: Mouse	UNIPROT ID: P01008	Recommended Dilutions: IF/ICC 1:50-1:500
Isotype: IgG1	Full Name: serpin peptidase inhibitor, clade C (antithrombin), member 1	Excitation/Emission maxima wavelengths: 493 nm / 522 nm
Immunogen Catalog Number: AG9880	Calculated MW: 464 aa, 53 kDa	
	Observed MW: 53 kDa	

Applications

Tested Applications: IF/ICC	Positive Controls: IF/ICC : HepG2 cells,
Species Specificity: human, mouse, rat	

Background Information

SERPINC1, also named Antithrombin III or Antithrombin, is a plasma protease inhibitor and a member of the serpin superfamily. This protein inhibits thrombin as well as other activated serine proteases of the coagulation system, and it regulates the blood coagulation cascade. More than 120 mutations have been identified for this gene, many of which are known to cause antithrombin-III deficiency.

Storage

Storage:
Store at -20°C. Avoid exposure to light. Stable for one year after shipment.
Storage Buffer:
PBS with 50% Glycerol, 0.05% Proclin300, 0.5% BSA, pH 7.3.
Aliquoting is unnecessary for -20°C storage

For technical support and original validation data for this product please contact:

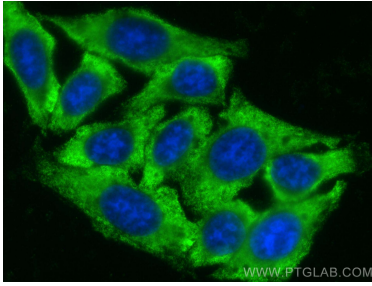
T: 4006900926

E: Proteintech-CN@ptglab.com

W: ptgcn.com

This product is exclusively available under Proteintech Group brand and is not available to purchase from any other manufacturer.

Selected Validation Data



Immunofluorescent analysis of (-20°C Ethanol) fixed HepG2 cells using Coralite® Plus 488 Serpin C1/Antithrombin III antibody (CL488-66052, Clone: 2B2E5) at dilution of 1:200.