

For Research Use Only

CoraLite® Plus 488-conjugated Cyclophilin B Monoclonal antibody

Catalog Number: CL488-66047

Featured Product



Basic Information

Catalog Number:

CL488-66047

Size:

2000 ug/ml

Source:

Mouse

Isotype:

IgG2a

Immunogen Catalog Number:

AG17957

GenBank Accession Number:

BC032138

GeneID (NCBI):

5479

UNIPROT ID:

P23284

Full Name:

peptidylprolyl isomerase B
(cyclophilin B)

Calculated MW:

216 aa, 24 kDa

Observed MW:

19-24 kDa

Purification Method:

Protein A purification

CloneNo.:

8H4F1

Recommended Dilutions:

WB 1:500-1:1000

Excitation/Emission maxima
wavelengths:

493 nm / 522 nm

Applications

Tested Applications:

WB

Species Specificity:

human, mouse

Positive Controls:

WB : Jurkat cells, HeLa cells, HepG2 cells

Background Information

PPIB, also named as CYPB, SCYLP, PPIase B and CYP-S1, belongs to the cyclophilin-type PPIase family and PPIase B subfamily. PPIases accelerate the folding of proteins. It catalyzes the cis-trans isomerization of proline imidic peptide bonds in oligopeptides. PPIB is secreted in biological fluids such as blood or milk and binds to a specific receptor present on the human lymphoblastic cell line Jurkat and on human peripheral blood lymphocytes. The full-length of PPIB has 216aa (24 kDa), and a 33aa-signal peptide could be removed in the mature form (about 19 kDa).

Storage

Storage:

Store at -20°C. Avoid exposure to light. Stable for one year after shipment.

Storage Buffer:

PBS with 50% Glycerol, 0.05% Proclin300, 0.5% BSA, pH 7.3.

Aliquoting is unnecessary for -20°C storage

For technical support and original validation data for this product please contact:

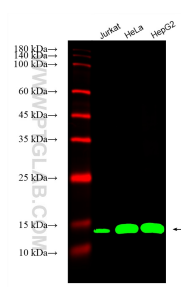
T: 4006900926

E: Proteintech-CN@ptglab.com

W: ptgcn.com

This product is exclusively available under Proteintech Group brand and is not available to purchase from any other manufacturer.

Selected Validation Data



Various lysates were subjected to SDS PAGE followed by western blot with CL488-66047 (Cyclophilin B antibody) at dilution of 1:800 incubated at room temperature for 1.5 hours.