

# CoraLite® Plus 488-conjugated Protein C inhibitor Monoclonal antibody

**Catalog Number:** CL488-66030

## Basic Information

<b>Catalog Number:</b> CL488-66030	<b>GenBank Accession Number:</b> BC008915	<b>Purification Method:</b> Protein A purification
<b>Size:</b> 1000 µg/ml	<b>GeneID (NCBI):</b> 5104	<b>CloneNo.:</b> 2H6G2
<b>Source:</b> Mouse	<b>UNIPROT ID:</b> P05154	<b>Recommended Dilutions:</b> IF-P 1:50-1:500
<b>Isotype:</b> IgG2a	<b>Full Name:</b> serpin peptidase inhibitor, clade A (alpha-1 antiproteinase, antitrypsin), member 5	<b>Excitation/Emission maxima wavelengths:</b> 493 nm / 522 nm
<b>Immunogen Catalog Number:</b> AG18094	<b>Calculated MW:</b> 46 kDa	

## Applications

<b>Tested Applications:</b> IF-P	<b>Positive Controls:</b> IF-P : human ovary tumor tissue,
<b>Species Specificity:</b> human	

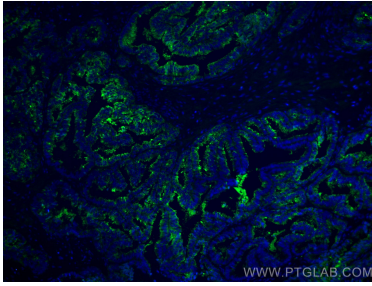
## Background Information

SERPINA5 (also called Protein C Inhibitor, PCI ) is a serpin type of serine protease inhibitor that is found in many tissues and fluids in human, including blood plasma, seminal plasma and urine. PCI found in blood originates from the liver and is capable of inhibiting several serine proteases involved in the regulation of coagulation and fibrinolysis, including activated protein C, thrombin, factor Xa, various kallikreins and plasminogen activators. PCI has been found to have antimicrobial and antitumor properties and thus appears to be a multi-functional protein.

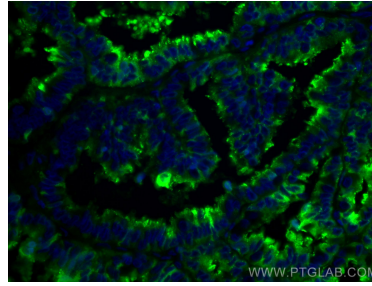
## Storage

**Storage:**  
Store at -20°C. Avoid exposure to light.  
**Storage Buffer:**  
PBS with 50% Glycerol, 0.05% Proclin300, 0.5% BSA, pH 7.3.  
**Aliquoting is unnecessary for -20°C storage**

## Selected Validation Data



Immunofluorescent analysis of (4% PFA) fixed human ovary tumor tissue using CoraLite® Plus 488 Protein C inhibitor antibody (CL488-66030, Clone: 2H6G2 ) at dilution of 1:200.



Immunofluorescent analysis of (4% PFA) fixed human ovary tumor tissue using CoraLite® Plus 488 Protein C inhibitor antibody (CL488-66030, Clone: 2H6G2 ) at dilution of 1:200.