

For Research Use Only

# CoraLite® Plus 488-conjugated DDB1 Monoclonal antibody



Catalog Number: CL488-66010

Featured Product

## Basic Information

Catalog Number:

CL488-66010

Size:

1000 µg/ml

Source:

Mouse

Isotype:

IgG2b

Immunogen Catalog Number:

AG17903

GenBank Accession Number:

BC011686

GeneID (NCBI):

1642

UNIPROT ID:

Q16531

Full Name:

damage-specific DNA binding protein

1, 127kDa

Calculated MW:

1140 aa, 127 kDa

Observed MW:

127 kDa

Purification Method:

Protein A purification

CloneNo.:

4F6C6

Recommended Dilutions:

WB 1:500-1:2000

Excitation/Emission maxima

wavelengths:

493 nm / 522 nm

## Applications

Tested Applications:

WB

Species Specificity:

human, mouse, rat

Positive Controls:

WB : Jurkat cells, HEK-293 cells, HeLa cells

## Background Information

DDB1, also named as XAP1, XPCe, DDBa and XPE-BF, belongs to the DDB1 family. It is required for DNA repair. DDB1 binds to DDB2 to form the UV-damaged DNA-binding protein complex (the UV-DDB complex). The UV-DDB complex may recognize UV-induced DNA damage and recruit proteins of the nucleotide excision repair pathway (the NER pathway) to initiate DNA repair. The functional specificity of the DCX E3 ubiquitin-protein ligase complex is determined by the variable substrate recognition component recruited by DDB1. This antibody is specific to DDB1.

## Storage

Storage:

Store at -20°C. Avoid exposure to light. Stable for one year after shipment.

Storage Buffer:

PBS with 50% Glycerol, 0.05% Proclin300, 0.5% BSA, pH 7.3.

Aliquoting is unnecessary for -20°C storage

For technical support and original validation data for this product please contact:

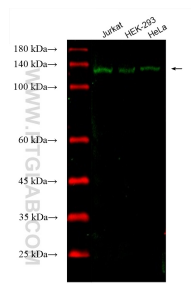
T: 4006900926

E: [Proteintech-CN@ptglab.com](mailto:Proteintech-CN@ptglab.com)

W: [ptgcn.com](http://ptgcn.com)

This product is exclusively available under Proteintech Group brand and is not available to purchase from any other manufacturer.

## Selected Validation Data



Various lysates were subjected to SDS PAGE followed by western blot with CL488-66010 (DDB1 antibody) at dilution of 1:1000 incubated at room temperature for 1.5 hours.