

For Research Use Only

# CoraLite® Plus 488-conjugated HA Tag Monoclonal antibody

Catalog Number: CL488-66006

2 Publications



## Basic Information

Catalog Number:

CL488-66006

Size:

1000 µg/ml

Source:

Mouse

Isotype:

IgG1

GenBank Accession Number:

GeneID (NCBI):

Full Name:

Purification Method:

Protein G purification

CloneNo.:

1F5C6

Recommended Dilutions:

IF/ICC 1:50-1:500

Excitation/Emission maxima wavelengths:

493 nm / 522 nm

## Applications

Tested Applications:

IF/ICC

Cited Applications:

IF

Species Specificity:

recombinant protein

Positive Controls:

IF/ICC : Transfected HEK-293 cells,

## Background Information

Protein tags are a protein or peptide sequences located either on the C- or N- terminal of the target protein, which can facilitate solubility, detection, purification, localization, and expression of the target protein. The HA tag corresponds to amino acid residues YPYDVPDYA of a surface glycoprotein -human influenza virus hemagglutinin (HA). The HA tag is commonly used for a variety of research applications including chromatin immunoprecipitation, ELISA, flow cytometry, western blotting, immunocytochemistry/immunofluorescence among of others.

## Notable Publications

Author	Pubmed ID	Journal	Application
Hang Zhao	39508411	J Extracell Vesicles	
Jitao Zeng	37952156	Cell Rep	IF

## Storage

Storage:

Store at -20°C. Avoid exposure to light. Stable for one year after shipment.

Storage Buffer:

PBS with 50% Glycerol, 0.05% Proclin300, 0.5% BSA, pH 7.3.

Aliquoting is unnecessary for -20°C storage

For technical support and original validation data for this product please contact:

T: 4006900926

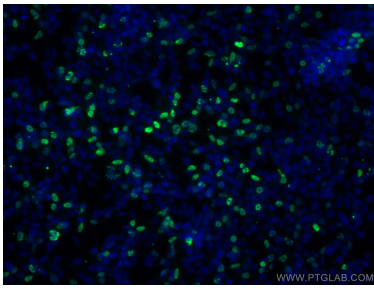
E: [Proteintech-CN@ptglab.com](mailto:Proteintech-CN@ptglab.com)

W: [ptgcn.com](http://ptgcn.com)

This product is exclusively available under Proteintech Group brand and is not available to purchase from any other manufacturer.

---

## Selected Validation Data



Immunofluorescent analysis of (-20°C Ethanol)  
fixed Transfected HEK-293 cells using CoraLite®  
Plus 488 HA Tag antibody (CL488-66006, Clone:  
1F5C6 ) at dilution of 1:200.