

For Research Use Only

CoraLite® Plus 488 Anti-Human CD71 (OKT9) Mouse IgG2a Recombinant Antibody

Catalog Number: CL488-65605



Basic Information

Catalog Number:

CL488-65605

Concentration:

100tests, 5 ul/test

Source:

Mouse

Isotype:

IgG2a

GenBank Accession Number:

BC001188

GeneID (NCBI):

7037

ENSEMBL Gene ID:

ENSG00000072274

UNIPROT ID:

P02786

Full Name:

transferrin receptor (p90, CD71)

Calculated MW:

85 kDa

Purification Method:

Protein A purification

CloneNo.:

OKT9

Recommended Dilutions:

FC: 5 ul per 10⁶ cells in a 100 µl suspension

Excitation/Emission maximum wavelengths:

493 nm / 522 nm

Applications

Tested Applications:

FC

Species Specificity:

human

Positive Controls:

FC : PHA treated human PBMCs,

Background Information

CD71, also known as transferrin receptor protein 1 (TfR1), is a transmembrane glycoprotein composed of two disulfide-linked monomers, each of 90 kDa molecular weight. Each monomer binds one holo-transferrin molecule creating an iron-Tf-TfR complex that enters the cell by endocytosis. CD71 is present on actively proliferating cells and is essential for iron transport into proliferating cells.

Storage

Storage:

Store at 2-8°C. Avoid exposure to light. Stable for one year after shipment.

Storage Buffer:

PBS with 0.09% sodium azide and 0.5% BSA, pH7.3

For technical support and original validation data for this product please contact:

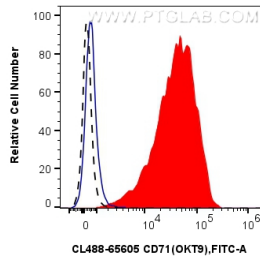
T: 4006900926

E: Proteintech-CN@ptglab.com

W: ptgcn.com

This product is exclusively available under Proteintech Group brand and is not available to purchase from any other manufacturer.

Selected Validation Data



1x10⁶ PHA treated human PBMCs were surface stained with 5 ul CoraLite® Plus 488 Anti-Human CD71 (OKT9) Mouse IgG2a RecAb (CL488-65605, Clone: OKT9) (red) or CoraLite® Plus 488 Mouse IgG2a Isotype Control (C1.18.4) (CL488-65208, Clone: C1.18.4) (blue). 1x10⁶ untreated human PBMCs were surface stained with 5 ul CoraLite® Plus 488 Anti-Human CD71 (OKT9) Mouse IgG2a RecAb (CL488-65605, Clone: OKT9) (black, dashed). Cells were not fixed.