

For Research Use Only



CoraLite® Plus 488 Anti-Human CD11b (ICRF44) Mouse IgG2a Recombinant Antibody

Catalog Number: **CL488-65582**

Basic Information

Catalog Number: CL488-65582	GenBank Accession Number: BC096346	Purification Method: Protein A purification
Size: 100tests, 5 µl/test	GeneID (NCBI): 3684	CloneNo.: ICRF44
Source: Mouse	ENSEMBL Gene ID: ENSG00000169896	Excitation/Emission maxima wavelengths: 493 nm / 522 nm
Isotype: IgG2a	Full Name: integrin, alpha M (complement component 3 receptor 3 subunit)	
	Calculated MW: 1152 aa, 127 kDa	

Applications

Tested Applications:
FC

Species Specificity:
human

Background Information

Integrins are cell adhesion receptors that are heterodimers composed of non-covalently associated α and β subunits (PMID: 9779984). CD11b, also known as Integrin alpha M or CR3A, belongs to the integrin alpha chain family. CD11b forms an α / β heterodimer with CD18 (integrin β 2). CD11b/CD18 is implicated in various adhesive interactions of monocytes, macrophages and granulocytes as well as in mediating the uptake of complement-coated particles and pathogens (PMID: 9558116; 20008295). CD11b/CD18 is a receptor for the complement protein fragment iC3b, and is also a receptor for fibrinogen, factor X and ICAM1 (PMID: 2971974; 15485828).

Storage

Storage:
Store at 2-8°C. Avoid exposure to light.
Storage Buffer:
PBS with 0.09% sodium azide and 0.5% BSA.

For technical support and original validation data for this product please contact:

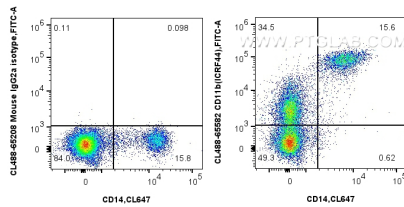
T: 4006900926

E: Proteintech-CN@ptglab.com

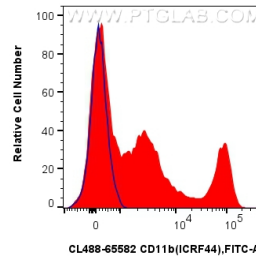
W: ptgcn.com

This product is exclusively available under Proteintech Group brand and is not available to purchase from any other manufacturer.

Selected Validation Data



1x10⁶ human PBMCs were surface stained with CoraLite® Plus 647 Anti-Human CD14 and 5 ul CoraLite® Plus 488 Anti-Human CD11b Mouse IgG2a Recombinant Antibody (CL488-65582, Clone: ICRF44), or CoraLite® Plus 488 Mouse IgG2a Isotype Control (CL488-65208, Clone: C1.18.4). Cells were incubated with FC Receptor Block prior to staining. Cells were not fixed.



1x10⁶ human PBMCs were surface stained with 5 ul CoraLite® Plus 488 Anti-Human CD11b Mouse IgG2a Recombinant Antibody (CL488-65582, Clone: ICRF44) (red), or CoraLite® Plus 488 Mouse IgG2a Isotype Control (CL488-65208, Clone: C1.18.4) (blue). Cells were incubated with FC Receptor Block prior to staining. Cells were not fixed.