

For Research Use Only

# CoraLite® Plus 488 Anti-Human CD19 (4G7) Mouse IgG2a Recombinant Antibody

Catalog Number: CL488-65562



## Basic Information

Catalog Number:

CL488-65562

Concentration:

100 tests, 5 µl / test

Source:

Mouse

Isotype:

IgG2a

GenBank Accession Number:

BC006338

GeneID (NCBI):

930

ENSEMBL Gene ID:

ENSG00000177455

UNIPROT ID:

P15391

Full Name:

CD19 molecule

Calculated MW:

556 aa, 61 kDa

Purification Method:

Protein A purification

CloneNo.:

4G7

Excitation/Emission maxima wavelengths:

493 nm / 522 nm

## Applications

Tested Applications:

FC

Species Specificity:

Human

## Background Information

CD19 is a 95 kDa type I transmembrane glycoprotein belonging to the immunoglobulin superfamily (PMID: 2472450). It is expressed by B cells and follicular dendritic cells. CD19 is up-regulated at the step of B-lineage commitment during the differentiation of the hematopoietic stem cell, it remains on during subsequent stages of differentiation until finally down-regulated during terminal differentiation into plasma cells (PMID: 8528044). CD19 is involved in B cell development, activation and differentiation. It is the dominant component for the signaling complex on B cells that includes CD21 (CR2), CD81 (TAPA-1) and CD225 and acts as a critical co-receptor for BCR signal transduction (PMID: 23210908).

## Storage

Storage:

Store at 2-8°C. Stable for one year after shipment.

Storage Buffer:

PBS with 0.09% sodium azide and 0.5% BSA.

For technical support and original validation data for this product please contact:

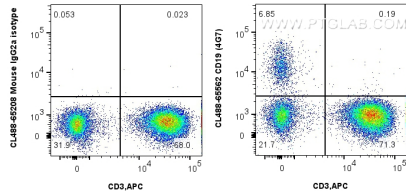
T: 4006900926

E: [Proteintech-CN@ptglab.com](mailto:Proteintech-CN@ptglab.com)

W: [ptgcn.com](http://ptgcn.com)

This product is exclusively available under Proteintech Group brand and is not available to purchase from any other manufacturer.

## Selected Validation Data



1x10<sup>6</sup> human PBMCs were surface stained with APC Anti-Human CD3 and 5 ul CoraLite® Plus 488 Anti-Human CD19 Mouse Recombinant Antibody (CL488-65562, Clone:4G7), or CoraLite® Plus 488 Mouse IgG2a Isotype Control (CL488-65208, Clone: C1.18.4). Cells were not fixed. Lymphocytes were gated.