

For Research Use Only

# CoraLite® Plus 488 Anti-Human HLA-DR (L243) Mouse IgG2a Recombinant Antibody

Catalog Number: CL488-65560



## Basic Information

Catalog Number:

CL488-65560

Size:

100tests, 5 µl/test

Source:

Mouse

Isotype:

IgG2a

GenBank Accession Number:

BC032350

GeneID (NCBI):

3122

ENSEMBL Gene ID:

ENSG00000204287

UNIPROT ID:

P01903

Full Name:

major histocompatibility complex,  
class II, DR alpha

Calculated MW:

254 aa, 29 kDa

Purification Method:

Protein A purification

CloneNo.:

L243

Excitation/Emission maxima  
wavelengths:

493 nm / 522 nm

## Applications

Tested Applications:

FC

Species Specificity:

Human

## Background Information

### Storage

Storage:

Store at 2-8°C. Stable for one year after shipment.

Storage Buffer:

PBS with 0.09% sodium azide and 0.5% BSA.

For technical support and original validation data for this product please contact:

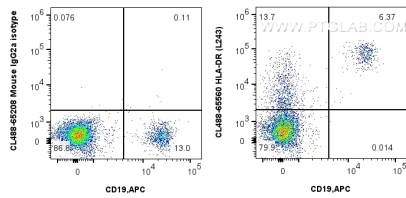
T: 4006900926

E: [Proteintech-CN@ptglab.com](mailto:Proteintech-CN@ptglab.com)

W: [ptgcn.com](http://ptgcn.com)

This product is exclusively available under Proteintech Group brand and is not available to purchase from any other manufacturer.

## Selected Validation Data



1x10<sup>6</sup> human PBMCs were surface stained with APC Anti-Human CD19 and 5 ul CoraLite® Plus 488 Anti-Human HLA-DR Mouse Recombinant Antibody (CL488-65560, Clone:L243), or CoraLite® Plus 488 Mouse IgG2a Isotype Control (CL488-65208, Clone: C1.18.4). Cells were not fixed. Lymphocytes were gated.