

For Research Use Only

CoraLite® Plus 488 Anti-Human CD155/PVR (SKII.4)

Catalog Number: CL488-65251



Basic Information

Catalog Number:

CL488-65251

Concentration:

100 tests, 5 µl/test

Source:

Mouse

Isotype:

IgG1, kappa

GenBank Accession Number:

BC015542

GeneID (NCBI):

5817

UNIPROT ID:

P15151

Full Name:

poliovirus receptor

Calculated MW:

45 kDa

Purification Method:

N/A

CloneNo.:

SKII.4

Excitation/Emission maxima wavelengths:

493 nm / 522 nm

Applications

Tested Applications:

FC

Species Specificity:

human

Background Information

CD155, also known as PVR, is a type I transmembrane glycoprotein in the immunoglobulin superfamily. It contains three extracellular immunoglobulin-like domains, D1-D3, of which D1 is recognized by the virus. Mature human CD155 consists of a 323 amino acid extracellular domain with one N-terminal V-type and two C2-type Ig-like domains, a 24 amino acid transmembrane segment, and a 50 amino acid cytoplasmic tail. CD155 is thought to play a role in adhesion by interaction with the ECM component vitronectin as well as a role in NK killing of tumor cells. CD155 binds to two receptors of NK cells, CD96 and CD226, and accumulates at cell-cell contact sites, leading to the formation of mature immune synapses between NK cells and target cells. CD155 serves as the entry receptor for poliovirus and thereby mediates human susceptibility to poliovirus infection.

Storage

Storage:

Store at 2-8°C. Avoid exposure to light. Stable for one year after shipment.

Storage Buffer:

PBS with 0.09% sodium azide and 0.5% BSA, pH7.3

For technical support and original validation data for this product please contact:

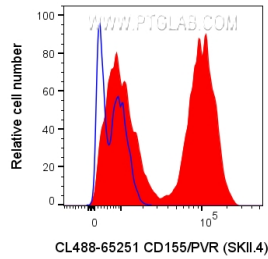
T: 4006900926

E: Proteintech-CN@ptglab.com

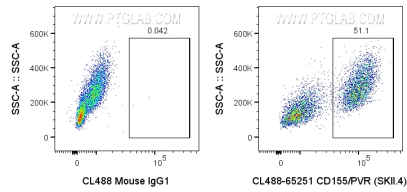
W: ptgcn.com

This product is exclusively available under Proteintech Group brand and is not available to purchase from any other manufacturer.

Selected Validation Data



U-937 cells (positive) and Jurkat cells (negative) were mixed 1:1 and 1×10^6 cells were surface stained with 5 μ l CoraLite® Plus 488 Anti-Human CD155/PVR (CL488-65251, Clone: SKII.4) (red) or CoraLite® Plus 488 Mouse IgG1 Isotype Control (CL488-65124, Clone: MOPC-21) (blue). Cells were not fixed.



U-937 cells (positive) and Jurkat cells (negative) were mixed 1:1 and 1×10^6 cells were surface stained with 5 μ l CoraLite® Plus 488 Anti-Human CD155/PVR (CL488-65251, Clone: SKII.4) or CoraLite® Plus 488 Mouse IgG1 Isotype Control (CL488-65124, Clone: MOPC-21). Cells were not fixed.