

For Research Use Only

CoraLite® Plus 488 Mouse IgM Isotype Control (MOPC-104E)

Catalog Number: CL488-65243



Basic Information

Catalog Number:

CL488-65243

Size:

100ug, 0.2 mg/mL

Source:

Mouse

Isotype:

IgM, lambda

GenBank Accession Number:

GeneID (NCBI):

Full Name:

Purification Method:

Affinity purification

CloneNo.:

MOPC-104E

Excitation/Emission maxima
wavelengths:

493 nm / 522 nm

Applications

Tested Applications:

FC

Species Specificity:

n/a

Background Information

The MOPC-104E immunoglobulin is useful as an isotype-matched control for mouse IgM antibodies. B1355S dextran, nigerosyl-alpha (1-3)-nigerose, and nigerosyl-alpha (1-3)-glucose have abilities to bind to MOPC-104E immunoglobulin (PMID: 6165777). This antibody has been quality-tested for flow cytometry as negative control.

Storage

Storage:

Store at 2-8°C. Avoid exposure to light. Stable for one year after shipment.

Storage Buffer:

PBS with 0.09% sodium azide and 0.5% BSA.

For technical support and original validation data for this product please contact:

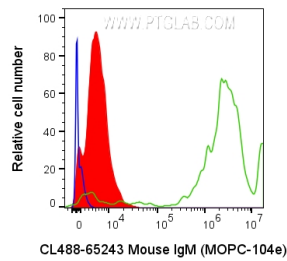
T: 4006900926

E: Proteintech-CN@ptglab.com

W: ptgcn.com

This product is exclusively available under Proteintech Group brand and is not available to purchase from any other manufacturer.

Selected Validation Data



1X10⁶ human peripheral blood platelets were surface stained with 0.2 ug CoraLite® Plus 488 Anti-Mouse IgM Isotype Control (CL488-65243, Clone: MOPC-104E) (red), unstained (blue), or CoraLite® Plus 488 Anti-Human CD36 (SMΦ) (green). Cells were not fixed.