

For Research Use Only

CoraLite® Plus 488 Anti-Mouse CD48 (HM48-1)



Catalog Number: **CL488-65227**

Basic Information

Catalog Number:

CL488-65227

Size:

100ug, 0.5 mg/ml

Source:

Armenian Hamster

Isotype:

IgG

GenBank Accession Number:

BC060977

GeneID (NCBI):

12506

UNIPROT ID:

P18181

Full Name:

CD48 antigen

Purification Method:

Protein A purification

CloneNo.:

HM48-1

Excitation/Emission maxima wavelengths:

493 nm / 522 nm

Applications

Tested Applications:

FC

Species Specificity:

mouse

Background Information

Signaling lymphocytic activation molecule family 2 (SLAMF2, CD48) is an adhesion and costimulatory molecule expressed constitutively on most hematopoietic cells, particularly in antigen-presenting cells (APC). CD48 is expressed on all the hematopoietic cells, both in humans and mice, except for murine neutrophils and long-term HSC. CD48 exists as both a membrane-bound (mCD48) and a soluble (sCD48) form. CD48 can activate T cells, antigen-presenting cells and granulocytes, by binding to CD2 or bacterial FimH, and through cell intrinsic effects. Interactions between CD48 and its high-affinity ligand CD244 are more complex, with both stimulatory and inhibitory outcomes. CD48 expression is increased in autoimmunity and allergy diseases, and anti-CD48 monoclonal antibodies have been shown to attenuate experimental autoimmune encephalomyelitis.

Storage

Storage:

Store at 2-8°C. Avoid exposure to light. Stable for one year after shipment.

Storage Buffer:

PBS with 0.09% sodium azide.

For technical support and original validation data for this product please contact:

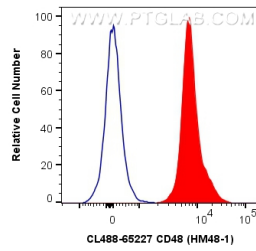
T: 4006900926

E: Proteintech-CN@ptglab.com

W: ptgcn.com

This product is exclusively available under Proteintech Group brand and is not available to purchase from any other manufacturer.

Selected Validation Data



1X10⁶ mouse splenocytes were surface stained with 0.5 ug CoraLite® Plus 488 Anti-Mouse CD48 (CL488-65227, Clone:HM48-1) (red), or 0.5 ug Isotype Control. Cells were not fixed.