

For Research Use Only

# CoraLite® Plus 488 Anti-Human CD21 (BU32)



Catalog Number: CL488-65198

## Basic Information

<b>Catalog Number:</b> CL488-65198	<b>GenBank Accession Number:</b> BC136394	<b>Purification Method:</b> Protein G purification
<b>Size:</b> 100tests, 5 µl/test	<b>GeneID (NCBI):</b> 1380	<b>CloneNo.:</b> BU32
<b>Source:</b> Mouse	<b>ENSEMBL Gene ID:</b> ENSG00000117322	<b>Excitation/Emission maxima wavelengths:</b> 493 nm / 522 nm
<b>Isotype:</b> IgG1, kappa	<b>UNIPROT ID:</b> P20023	
	<b>Full Name:</b> complement component (3d/Epstein Barr virus) receptor 2	
	<b>Calculated MW:</b> 1092 aa, 119 kDa	

## Applications

**Tested Applications:**  
FC

**Species Specificity:**  
Human

## Background Information

CD21, also known as complement receptor type 2 (CR2), complement C3d receptor, and Epstein-Barr virus receptor, is a transmembrane protein that contains a small cytoplasmic domain, a transmembrane region and an extracellular domain consisting of 15 tandem short consensus repeat sequences (PMID: 6230668; 2551147). It is expressed on B cells, follicular dendritic cells, thymocytes and a subset of peripheral T cells (PMID: 26119182). CD21 binds complement fragments C3d, C3dg and iC3b and acts as a receptor for the Epstein-Barr virus (PMID: 7753047). On B cells, together with CD19 and CD81, CD21 forms a complex that functions as a co-receptor to the BCR (PMID: 7542009). It is involved in B cells activation and functions.

## Storage

**Storage:**  
Store at 2-8°C. Avoid exposure to light. Stable for one year after shipment.

**Storage Buffer:**  
PBS with 0.1% sodium azide and 0.5% BSA, pH 7.3.

For technical support and original validation data for this product please contact:

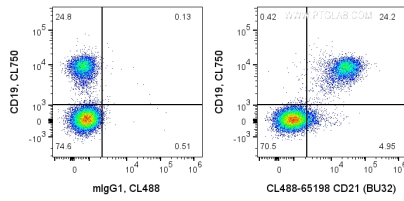
T: 4006900926

E: [Proteintech-CN@ptglab.com](mailto:Proteintech-CN@ptglab.com)

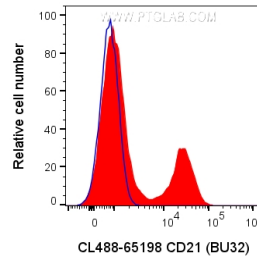
W: [ptgcn.com](http://ptgcn.com)

This product is exclusively available under Proteintech Group brand and is not available to purchase from any other manufacturer.

## Selected Validation Data



1X10<sup>6</sup> human PBMCs were surface co-stained with CL750 Anti-Human CD19 and 5 ul CoraLite® Plus 488 Anti-Human CD21 (CL488-65198, Clone:BU32), or Mouse IgG1 Isotype Control. Cells were not fixed. Lymphocytes were gated.



1X10<sup>6</sup> human PBMCs were surface stained with 5 ul CoraLite® Plus 488 Anti-Human CD21 (CL488-65198, Clone:BU32), or Mouse IgG1 Isotype Control. Cells were not fixed. Lymphocytes were gated.