

For Research Use Only

CoraLite® Plus 488 Anti-Human CD29 (TS2/16)

Catalog Number: CL488-65191

2 Publications



Basic Information

Catalog Number:

CL488-65191

Size:

100 tests, 5 ul/test

Source:

Mouse

Isotype:

IgG1, kappa

GenBank Accession Number:

BC020057

GeneID (NCBI):

3688

ENSEMBL Gene ID:

ENSG00000150093

UNIPROT ID:

P05556

Full Name:

integrin, beta 1 (fibronectin receptor, beta polypeptide, antigen CD29 includes MDF2, MSK12)

Calculated MW:

88 kDa

Purification Method:

Affinity purification

CloneNo.:

TS2/16

Excitation/Emission maxima wavelengths:

493 nm / 522 nm

Applications

Tested Applications:

FC

Cited Applications:

FC

Species Specificity:

human

Cited Species:

human

Background Information

Integrin beta-1 (ITGB1), also named as CD29, is a 130 kDa single chain type I glycoprotein that is expressed in a heterodimeric complex with one of six distinct α subunits, comprising the very late activation antigen (VLA) subfamily of adhesion receptors. It is one of the essential surface molecules expressed on human MSC from bone marrow and other sources. The β 1 subunit is also broadly expressed on lymphocytes and monocytes, weakly expressed on granulocytes, and not expressed on erythrocytes. These receptors are involved in a variety of cell-cell and cell-matrix interactions.

Notable Publications

Author	Pubmed ID	Journal	Application
Gui-Bo Liu	37449526	Mol Med Rep	
Gui-Bo Liu	37237241	J Bioenerg Biomembr	FC

Storage

Storage:

Store at 2-8°C. Avoid exposure to light. Stable for one year after shipment.

Storage Buffer:

PBS with 0.1% sodium azide and 0.5% BSA, pH 7.3.

For technical support and original validation data for this product please contact:

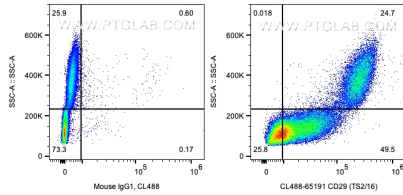
T: 4006900926

E: Proteintech-CN@ptglab.com

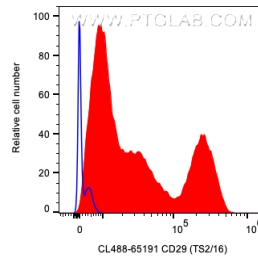
W: ptgcn.com

This product is exclusively available under Proteintech Group brand and is not available to purchase from any other manufacturer.

Selected Validation Data



1x10⁶ human PBMCs were surface stained with 5 ul CoraLite® Plus 488 Anti-Human CD29 (CL488-65191, Clone:TS2/16) or CoraLite® Plus 488 Mouse IgG1 Isotype Control (CL488-65124, Clone: MOPC-21). Cells were not fixed. Cells were treated with FC Receptor Block prior to staining. Lymphocytes and monocytes were gated.



1x10⁶ human PBMCs were surface stained with 5 ul CoraLite® Plus 488 Anti-Human CD29 (CL488-65191, Clone:TS2/16) or CoraLite® Plus 488 Mouse IgG1 Isotype Control (CL488-65124, Clone: MOPC-21). Cells were not fixed. Cells were treated with FC Receptor Block prior to staining. Lymphocytes and monocytes were gated.