

# CoraLite® Plus 488 Anti-Human CD8 (SK1)

Catalog Number: **CL488-65146**

## Basic Information

**Catalog Number:**

CL488-65146

**Size:**

100tests, 5 µl/test

**Source:**

Mouse

**Isotype:**

IgG1, kappa

**GenBank Accession Number:**

BC025715

**GeneID (NCBI):**

925

**ENSEMBL Gene ID:**

ENSG00000153563

**Full Name:**

CD8a molecule

**Calculated MW:**

235 aa, 26 kDa

**Purification Method:**

Affinity purification

**CloneNo.:**

SK1

**Excitation/Emission maxima wavelengths:**

493 nm / 522 nm

## Applications

**Tested Applications:**

FC

**Species Specificity:**

Human

## Background Information

CD8 is a transmembrane glycoprotein composed of two disulfide-linked chains. It can be present as a homodimer of CD8  $\alpha$  or as a heterodimer of CD8  $\alpha$  and CD8  $\beta$  (PMID: 3264320; 8253791). CD8 is found on most thymocytes. The majority of class I-restricted T cells express mostly the CD8  $\alpha$   $\beta$  heterodimer while CD8  $\alpha$   $\alpha$  homodimers alone have been found on some gut intraepithelial T cells, on some T cell receptor (TCR)  $\gamma$   $\delta$  T cells and on NK cells (PMID: 2111591; 1831127; 8420975). CD8 acts as a co-receptor that binds to MHC class-I and participates in cytotoxic T cell activation (PMID: 8499079). During T cell development, CD8 is required for positive selection of CD4<sup>-</sup>/CD8<sup>+</sup> T cells (PMID: 1968084).

## Storage

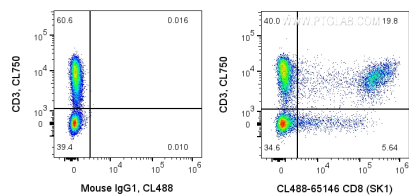
**Storage:**

Store at 2-8°C. Avoid exposure to light. Stable for one year after shipment.

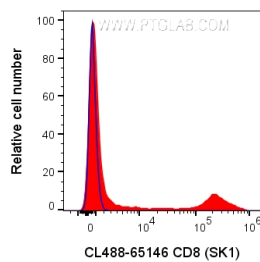
**Storage Buffer:**

PBS with 0.1% sodium azide and 0.5% BSA, pH 7.3.

## Selected Validation Data



1X10<sup>6</sup> human PBMCs were surface co-stained with CoraLite® Plus 750 Anti-Human CD3 and 5 ul CoraLite® Plus 488 Anti-Human CD8 (CL488-65146, Clone:SK1) or Mouse IgG1 Isotype Control. Cells were not fixed. Lymphocytes were gated.



1X10<sup>6</sup> human PBMCs were surface stained with 5 ul CoraLite® Plus 488 Anti-Human CD8 (CL488-65146, Clone:SK1) (red) or Mouse IgG1 Isotype Control. Cells were not fixed. Lymphocytes were gated.