

For Research Use Only

CoraLite® Plus 488 Anti-Mouse CD45R (B220) (RA3-6B2)

Catalog Number:CL488-65139



Basic Information

Catalog Number:

CL488-65139

Concentration:

100ug, 500 ug/ml

Source:

Rat

Isotype:

IgG2a, kappa

GenBank Accession Number:

BC028512

GeneID (NCBI):

19264

UNIPROT ID:

P06800

Full Name:

protein tyrosine phosphatase, receptor type, C

Purification Method:

Affinity purification

CloneNo.:

RA3-6B2

Recommended Dilutions:

IF/ICC: 1:200-1:800

FC: 0.5 ug per 10⁶ cells in 100 µl suspension

Excitation/Emission maxima wavelengths:

493 nm / 522 nm

Applications

Tested Applications:

IF/ICC, FC

Species Specificity:

mouse

Positive Controls:

IF/ICC : mouse splenocytes,

FC : mouse splenocytes,

Background Information

CD45, also known as protein tyrosine phosphatase, receptor type C, is a type I transmembrane protein expressed on the surface of all haematopoietic cells with the exception of erythrocytes and platelets (PMID: 3489673; 28615666). CD45 is a pan-haematopoietic cell marker and has been shown to be essential for T- and B-cell activation and signalling (PMID: 9429890; 16378097). CD45R (B220) is an isoform of CD45, expressed on murine B-lineage cells (except for plasma cells) and on a small sub-population of T cells (PMID: 6975314; 15712182). It is commonly used as a pan B-cell marker in mice. CD45R is also expressed on activated T cells and NK cell subsets (PMID: 7514808; 17923504). The RA3-6B2 clone reacts with human and mouse CD45R.

Storage

Storage:

Store at 2-8°C. Avoid exposure to light. Stable for one year after shipment.

Storage Buffer:

PBS with 0.09% sodium azide and 0.5% BSA, pH7.3

For technical support and original validation data for this product please contact:

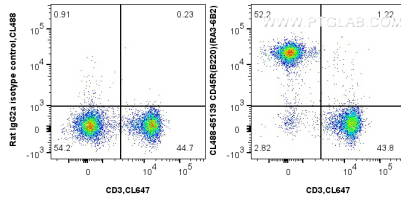
T: 4006900926

E: Proteintech-CN@ptglab.com

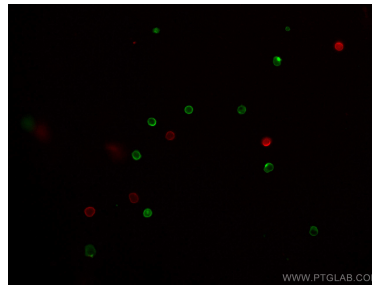
W: ptgcn.com

This product is exclusively available under Proteintech Group brand and is not available to purchase from any other manufacturer.

Selected Validation Data



1X10⁶ mouse splenocytes were surface stained with 0.5 ug CoraLite® Plus 488 Anti-Mouse CD45R (B220) (CL488-65139, Clone:RA3-6B2) or 0.5 ug CoraLite® Plus 488 Rat IgG2a Isotype Control (2A3) (CL488-65209, Clone: 2A3), and 0.5 ug CoraLite® Plus 647 Anti-Mouse CD3 (17A2) (CL647-65077, Clone: 17A2). Cells were not fixed.



Immunofluorescent analysis of mouse splenocytes using CoraLite® Plus 488-conjugated CD45R (B220) antibody (CL488-65139, Clone: RA3-6B2, green) at dilution of 1:400, and CoraLite® Plus 647-conjugated CD3 antibody (CL647-65077, Clone: 17A2, red).