

For Research Use Only

# CoraLite® Plus 488 Anti-Mouse CD25/IL-2RA (PC61.5)

Catalog Number: CL488-65137



## Basic Information

Catalog Number:

CL488-65137

Size:

100ug, 0.5 mg/ml

Source:

Rat

Isotype:

IgG1, lambda

GenBank Accession Number:

BC114437

GeneID (NCBI):

16184

UNIPROT ID:

P01590

Full Name:

interleukin 2 receptor, alpha chain

Purification Method:

Affinity purification

CloneNo.:

PC61.5

Excitation/Emission maxima wavelengths:

493 nm / 522 nm

## Applications

Tested Applications:

FC

Species Specificity:

mouse

## Background Information

Proliferation of T lymphocytes is triggered by the interaction of IL-2 with its specific receptor following T lymphocyte activation. The receptor for IL-2 has three forms, generated by different combinations of three different proteins, the alpha chain (IL-2R alpha), the beta chain (IL-2R beta), and the gamma chain (IL-2R gamma) (PMID: 8476561). IL-2R alpha (also known as CD25) is a type I transmembrane protein present on activated T cells, activated B cells, some thymocytes, myeloid precursors, and oligodendrocytes. CD25 is also found on natural CD4<sup>+</sup>Foxp3<sup>+</sup> Treg cells (PMID: 22585674).

## Storage

Storage:

Store at 2-8°C. Avoid exposure to light. Stable for one year after shipment.

Storage Buffer:

PBS with 0.1% sodium azide and 0.5% BSA, pH 7.3.

For technical support and original validation data for this product please contact:

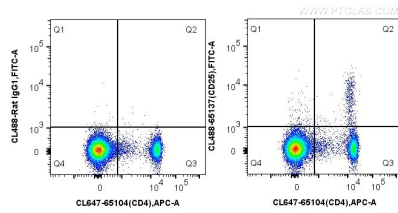
T: 4006900926

E: [Proteintech-CN@ptglab.com](mailto:Proteintech-CN@ptglab.com)

W: [ptgcn.com](http://ptgcn.com)

This product is exclusively available under Proteintech Group brand and is not available to purchase from any other manufacturer.

## Selected Validation Data



1X10<sup>6</sup> mouse splenocytes were surface co-stained with CoraLite® Plus 647 Anti-Mouse CD4 and 0.125 ug CoraLite® Plus 488 Anti-Mouse CD25 (CL488-65137, Clone: PC61.5) or 0.125 ug CoraLite® Plus 488-conjugated Rat IgG1 isotype control. Cells were not fixed.