

For Research Use Only

CoraLite® Plus 488 Mouse IgG1 Isotype Control (MOPC-21)



Catalog Number: CL488-65124

1 Publications

Basic Information

Catalog Number:

CL488-65124

Size:

100ug, 500 ug/ml

Source:

Mouse

Isotype:

IgG1, kappa

GenBank Accession Number:

GeneID (NCBI):

16017

UNIPROT ID:

P01868

Full Name:

immunoglobulin heavy constant gamma 1 (G1m marker)

Purification Method:

Affinity purification

CloneNo.:

MOPC-21

Excitation/Emission maxima wavelengths:

493 nm / 522 nm

Applications

Tested Applications:

FC

Species Specificity:

n/a

Background Information

The MOPC-21 immunoglobulin is useful as an isotype-matched control. The MOPC-21 immunoglobulin has an unknown binding specificity and is used as an isotype control for mouse IgG1 antibodies. This antibody has been quality-tested for flow cytometry as negative control.

Notable Publications

Author	Pubmed ID	Journal	Application
Hang Zhao	39508411	J Extracell Vesicles	

Storage

Storage:

Store at 2-8°C. Avoid exposure to light. Stable for one year after shipment.

Storage Buffer:

PBS with 0.1% sodium azide and 0.5% BSA, pH 7.3.

For technical support and original validation data for this product please contact:

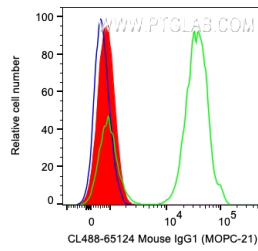
T: 4006900926

E: Proteintech-CN@ptglab.com

W: ptgcn.com

This product is exclusively available under Proteintech Group brand and is not available to purchase from any other manufacturer.

Selected Validation Data



1X10⁶ human PBMCs were surface stained with 0.2 ug CoraLite® Plus 488 Anti-Mouse IgG1 Isotype Control (CL488-65124, Clone: MOPC-21) (red), CL488 Anti-Human CD3 (green), or unstained (blue). Cells were not fixed. Lymphocytes were gated.