

For Research Use Only

CoraLite® Plus 488 Anti-Mouse Ly-6G (1A8)

Catalog Number: CL488-65078



Basic Information

Catalog Number:

CL488-65078

Concentration:

100ug, 0.5 mg/ml

Source:

Rat

Isotype:

IgG2a, kappa

GenBank Accession Number:

X70920

GeneID (NCBI):

546644

Full Name:

Lymphocyte antigen 6 complex, locus

G

Purification Method:

Affinity purification

CloneNo.:

1A8

Excitation/Emission maxima

wavelengths:

493 nm / 522 nm

Applications

Tested Applications:

FC

Species Specificity:

mouse

Background Information

Ly-6G (lymphocyte antigen 6 complex, locus G), also known as Gr-1, is a 21-25 kDa, glycosylphosphatidylinositol-anchored protein expressed on myeloid lineage cells in mouse bone marrow (PMID: 8360469). The expression of Ly-6G increases on neutrophils as they differentiate from immature cells in the bone marrow to mature cells in the blood and spleen (PMID: 8890901). Antibodies targeting Ly6G (RB6-8C5 or 1A8) are commonly used in studies aimed at identifying the role of neutrophils (PMID: 23543767). The 1A8 mAb is specific for Ly-6G (PMID: 8360469).

Storage

Storage:

Store at 2-8°C. Avoid exposure to light. Stable for one year after shipment.

Storage Buffer:

PBS with 0.1% sodium azide and 0.5% BSA, pH 7.3.

For technical support and original validation data for this product please contact:

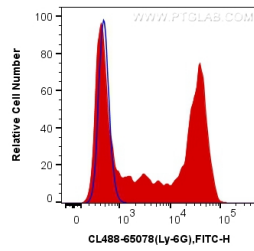
T: 4006900926

E: Proteintech-CN@ptglab.com

W: ptgcn.com

This product is exclusively available under Proteintech Group brand and is not available to purchase from any other manufacturer.

Selected Validation Data



1X10⁶ mouse bone marrow cells were surface stained with 0.25 ug CoraLite® Plus 488 Anti-Mouse Ly-6G (CL488-65078, Clone:1A8) (red), or 0.25 ug Control Antibody. Cells were not fixed.