

For Research Use Only

CoraLite® Plus 488 Anti-Mouse CD49b (DX5)



Catalog Number: CL488-65065

Basic Information

Catalog Number:

CL488-65065

Size:

100 tests, 5 µl/test

Source:

Rat

Isotype:

IgM, kappa

GenBank Accession Number:

BC065139

GeneID (NCBI):

16398

UNIPROT ID:

Q62469

Full Name:

integrin alpha 2

Purification Method:

Affinity purification

CloneNo.:

DX5

Excitation/Emission maxima wavelengths:

493 nm / 522 nm

Applications

Tested Applications:

FC

Species Specificity:

Mouse

Background Information

Integrins are a large family of α / β transmembrane receptors playing a key role in cell-cell interactions and cell adhesion to the extracellular matrix (PMID: 30374344). CD49b, also known as integrin alpha-2, is a 150 kDa transmembrane glycoprotein expressed on a wide variety of cell types including platelets, megakaryocytes, NK cells, NKT cells, neutrophils, and long-term activated T cells (PMID: 18802064; 2415516). Integrin alpha-2/beta-1 (also known as VLA-2) is a receptor for laminin, collagen, collagen C-propeptides, fibronectin and E-cadherin (PMID: 2557634). It is responsible for adhesion of platelets and other cells to collagens, modulation of collagen and CLG gene expression, force generation and organization of newly synthesized extracellular matrix.

Storage

Storage:

Store at 2-8°C. Avoid exposure to light. Stable for one year after shipment.

Storage Buffer:

PBS with 0.1% sodium azide and 0.5% BSA, pH 7.3.

For technical support and original validation data for this product please contact:

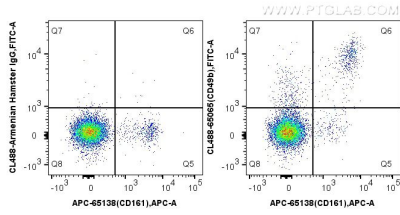
T: 4006900926

E: Proteintech-CN@ptglab.com

W: ptgcn.com

This product is exclusively available under Proteintech Group brand and is not available to purchase from any other manufacturer.

Selected Validation Data



1X10⁶ mouse splenocytes were surface stained with APC Anti-Mouse NK1.1 (CD161) (PK136) (APC-65138, Clone: PK136) and CoraLite® Plus 488-conjugated Rat IgM isotype control antibody (left) or 5.00 ul CoraLite® Plus 488-conjugated Anti-Mouse CD49b (CL488-65065, Clone: DX5) (right). Cells were not fixed.