

For Research Use Only

# CoraLite® Plus 488 Anti-Mouse CD16/32 (93)



Catalog Number: **CL488-65057**

## Basic Information

Catalog Number: CL488-65057	GenBank Accession Number: BC038070	Purification Method: Affinity purification
Size: 100ug, 0.5 mg/ml	GeneID (NCBI): 14130	CloneNo.: 93
Source: Rat	UNIPROT ID: P08101	Recommended Dilutions: IF/ICC 1:50-1:500
Isotype: IgG2a, lambda	Full Name: Fc receptor, IgG, low affinity IIb	Excitation/Emission maxima wavelengths: 493 nm / 522 nm

## Applications

Tested Applications: FC, IF/ICC	Positive Controls: IF/ICC : mouse splenocytes,
Species Specificity: Mouse	

## Background Information

CD16 (Fc  $\gamma$  RIII) is a 50-70 kDa low affinity Fc receptor found on the surface of natural killer cells, neutrophil polymorphonuclear leukocytes, monocytes and macrophages. CD16 mediates antibody-dependent cellular cytotoxicity (ADCC) and other antibody-dependent responses, such as phagocytosis. CD32 (Fc  $\gamma$  RII) is a 40 kD transmembrane glycoprotein that binds to the Fc region of IgG with low affinity. CD32 is present on phagocytic cells such as macrophages and neutrophils, and is involved in the process of phagocytosis and clearing of immune complexes.

## Storage

**Storage:**  
Store at 2-8°C. Avoid exposure to light. Stable for one year after shipment.  
**Storage Buffer:**  
PBS with 0.1% sodium azide and 0.5% BSA, pH 7.3.

For technical support and original validation data for this product please contact:

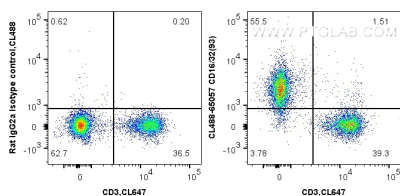
T: 4006900926

E: [Proteintech-CN@ptglab.com](mailto:Proteintech-CN@ptglab.com)

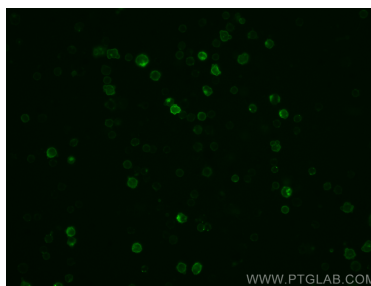
W: [ptgcn.com](http://ptgcn.com)

This product is exclusively available under Proteintech Group brand and is not available to purchase from any other manufacturer.

## Selected Validation Data



1X10<sup>6</sup> BALB/c mouse splenocytes were surface co-stained with CoraLite® Plus 647 Anti-Mouse CD3 (17A2) and 0.5 ug CoraLite® Plus 488 Anti-Mouse CD16/32 (CL488-65057, Clone:93) or 0.5 ug Isotype Control. Cells were not fixed.



Immunofluorescent analysis of mouse splenocytes using CoraLite® Plus 488 CD16/32 antibody (CL488-65057, Clone: 93 ) at dilution of 1:100.