

For Research Use Only

CoraLite® Plus 488 Anti-Mouse CD11b (M1/70)



Catalog Number: CL488-65055

2 Publications

Basic Information

Catalog Number:

CL488-65055

Concentration:

100ug, 500 ug/ml

Source:

Rat

Isotype:

IgG2b, kappa

GenBank Accession Number:

BC156991

GeneID (NCBI):

16409

UNIPROT ID:

E9Q604

Full Name:

integrin alpha M

Calculated MW:

127 kDa

Purification Method:

Affinity purification

CloneNo.:

M1/70

Recommended Dilutions:

IF/ICC 1:200-1:800

Excitation/Emission maxima wavelengths:

493 nm / 522 nm

Applications

Tested Applications:

IF/ICC, FC

Cited Applications:

IF, FC

Species Specificity:

mouse

Cited Species:

mouse

Positive Controls:

IF/ICC : mouse splenocytes,

Background Information

Integrins are cell adhesion receptors that are heterodimers composed of non-covalently associated α and β subunits (PMID: 9779984). CD11b, also known as Integrin alpha M or CR3A, belongs to the integrin alpha chain family. CD11b forms an α / β heterodimer with CD18 (integrin β 2). CD11b/CD18 is implicated in various adhesive interactions of monocytes, macrophages and granulocytes as well as in mediating the uptake of complement-coated particles and pathogens (PMID: 9558116; 20008295). CD11b/CD18 is a receptor for the complement protein fragment iC3b, and is also a receptor for fibrinogen, factor X and ICAM1 (PMID: 2971974; 15485828).

Notable Publications

| Author | Pubmed ID | Journal | Application |
|----------------|-----------|---------------------|-------------|
| Xiangxiang Liu | 37769392 | Biomed Pharmacother | IF |
| Luqiu Feng | 36918933 | Vet Res | FC |

Storage

Storage:

Store at 2-8°C. Avoid exposure to light. Stable for one year after shipment.

Storage Buffer:

PBS with 0.1% sodium azide and 0.5% BSA, pH 7.3.

For technical support and original validation data for this product please contact:

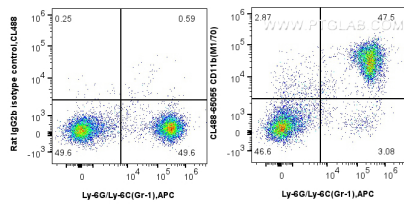
T: 4006900926

E: Proteintech-CN@ptglab.com

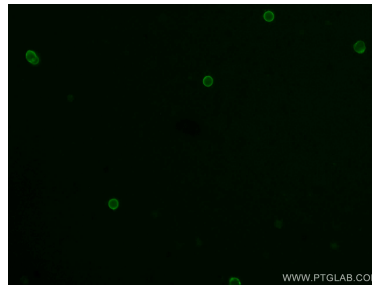
W: ptgcn.com

This product is exclusively available under Proteintech Group brand and is not available to purchase from any other manufacturer.

Selected Validation Data



1x10⁶ mouse bone marrow cells were surface stained with 0.25 ug CoraLite® Plus 488 Anti-Mouse CD11b (CL488-65055, Clone:M1/70), and 0.25 ug CoraLite® Plus 488 Rat IgG2b Isotype Control (LTF-2) (CL488-65211, Clone: LTF-2), and 0.25 ug APC Anti-Mouse Ly-6G/Ly-6C (Gr-1) (RB6-8C5) (APC-65140, Clone: RB6-8C5). Cells were not fixed.



Immunofluorescent analysis of mouse splenocytes using CoraLite® Plus 488-conjugated Anti-Mouse CD11b (CL488-65055, Clone: M1/70) at dilution of 1:400.