

# CoraLite® Plus 488-conjugated Prostein Monoclonal antibody

Catalog Number: **CL488-60343**

## Basic Information

**Catalog Number:**

CL488-60343

**Size:**

1000 µg/ml

**Source:**

Mouse

**Isotype:**

IgG2b

**Immunogen Catalog Number:**

AG5463

**GenBank Accession Number:**

BC050416

**GeneID (NCBI):**

85414

**UNIPROT ID:**

Q96JT2

**Full Name:**

solute carrier family 45, member 3

**Calculated MW:**

59 kDa

**Observed MW:**

55-59 kDa

**Purification Method:**

Protein A purification

**CloneNo.:**

5E12E2

**Recommended Dilutions:**

IF-P 1:50-1:500

**Excitation/Emission maxima**

**wavelengths:**

493 nm / 522 nm

## Applications

**Tested Applications:**

IF-P

**Species Specificity:**

human

**Positive Controls:**

IF-P : human prostate cancer tissue,

## Background Information

Prostein is a prostate tissue-specific protein whose expression is highly restricted to normal and cancerous prostate tissues. Anti-prostein is useful for the identification of prostate adenocarcinomas and is a good marker to identify prostatic origin in metastatic cancer.

## Storage

**Storage:**

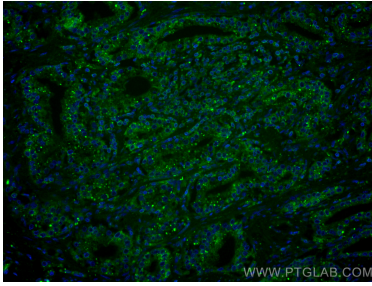
Store at -20°C. Avoid exposure to light.

**Storage Buffer:**

PBS with 50% Glycerol, 0.05% Proclin300, 0.5% BSA, pH 7.3.

Aliquoting is unnecessary for -20°C storage

## Selected Validation Data



Immunofluorescent analysis of (4% PFA) fixed human prostate cancer tissue using CoraLite® Plus 488 Protein antibody (CL488-60343, Clone: 5E12E2 ) at dilution of 1:200.