

For Research Use Only

CoraLite® Plus 488-conjugated CD39/ENTPD1 Monoclonal antibody



Catalog Number:CL488-60323

Basic Information

Catalog Number:

CL488-60323

Size:

1000 µg/ml

Source:

Mouse

Isotype:

IgG2a

Immunogen Catalog Number:

AG6165

GenBank Accession Number:

BC047664

GeneID (NCBI):

953

UNIPROT ID:

P49961

Full Name:

ectonucleoside triphosphate
diphosphohydrolase 1

Calculated MW:

58 kDa

Observed MW:

54 kDa

Purification Method:

Protein A purification

CloneNo.:

2D2H6

Excitation/Emission maxima
wavelengths:

493 nm / 522 nm

Applications

Tested Applications:

FC (Intra)

Species Specificity:

human

Background Information

ENTPD1 (Ectonucleoside triphosphate diphosphohydrolase 1) is also named CD39, NTPDase 1, and Ecto-ATPDase 1 and belongs to the GDA1/CD39 NTPase family. In the nervous system, it can hydrolyze ATP and other nucleotides to regulate purinergic neurotransmission. It is a noncovalent tetrameric protein and detergent inhibition of enzymatic activity is caused by dissociation of ectoapyrase tetramers into monomers (PMID: 9733785). And it is a 70- to 100-kDa protein that is heavily N-glycosylated (PMID:7930580). This protein has 6 glycosylation sites and 3 isoforms (58 kDa, 59 kDa, and 34 kDa) produced by alternative splicing. The soluble isoform of CD39 (38-478 amino acid) is located in the extracellular part and 60323-1-Ig can recognize the soluble form of CD39 (38-478aa) molecule.

Storage

Storage:

Store at -20°C. Avoid exposure to light. Stable for one year after shipment.

Storage Buffer:

PBS with 50% Glycerol, 0.05% Proclin300, 0.5% BSA, pH 7.3.

Aliquoting is unnecessary for -20°C storage

For technical support and original validation data for this product please contact:

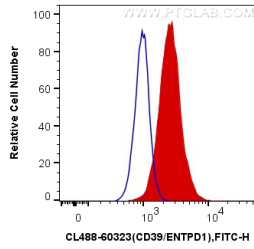
T: 4006900926

E: Proteintech-CN@ptglab.com

W: ptgcn.com

This product is exclusively available under Proteintech Group brand and is not available to purchase from any other manufacturer.

Selected Validation Data



1X10⁶ Jurkat cells were intracellularly stained with 0.4 ug CoraLite® Plus 488 Anti-Human CD39/ENTPD1 (CL488-60323, Clone:2D2H6) (red), or 0.4 ug Mouse IgG2a Isotype Control (CL488-66360-2, Clone: K11A1B2A2) (blue). Cells were fixed with 4% PFA and permeabilized with Flow Cytometry Perm Buffer (PF00011-C).