

For Research Use Only

CoraLite® Plus 488-conjugated IL-2 Monoclonal antibody



Catalog Number: **CL488-60306**

Basic Information

Catalog Number: CL488-60306	GenBank Accession Number: BC070338	Purification Method: Protein A purification
Size: 1000 µg/ml	GeneID (NCBI): 3558	CloneNo.: 2F11C5
Source: Mouse	UNIPROT ID: P60568	Recommended Dilutions: IF-P 1:50-1:500
Isotype: IgG2a	Full Name: interleukin 2	Excitation/Emission maxima wavelengths: 493 nm / 522 nm
Immunogen Catalog Number: AG10199	Calculated MW: 153 aa, 18 kDa	

Applications

Tested Applications: IF-P	Positive Controls: IF-P : human tonsillitis tissue,
Species Specificity: human	

Background Information

IL2 is a secreted cytokine involved in the operation and regulation of immune system. IL2 plays a pivotal role in T-cell activation and effector functions, including T cell proliferation, interferon- γ production and cytotoxicity. IL2 can stimulate the propagation of lymphocytes and induce the cytotoxic T lymphocytes and lymphokine-activated killer cells for tumor cells. IL2 also influences memory T cell homeostasis through the regulation of memory T cell numbers and enhances major histocompatibility complex II (MHC II) expression on tumor cells.

Storage

Storage:
Store at -20°C. Avoid exposure to light. Stable for one year after shipment.
Storage Buffer:
PBS with 50% Glycerol, 0.05% Proclin300, 0.5% BSA, pH 7.3.
Aliquoting is unnecessary for -20°C storage

For technical support and original validation data for this product please contact:

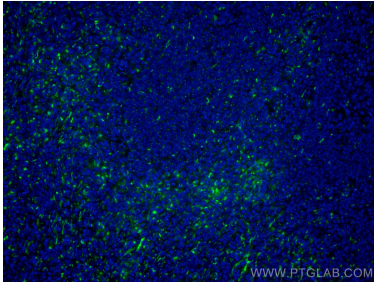
T: 4006900926

E: Proteintech-CN@ptglab.com

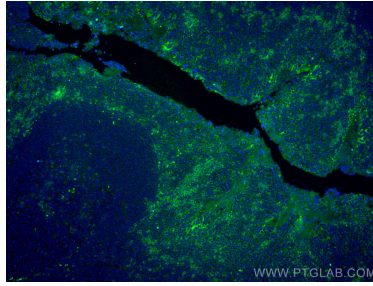
W: ptgcn.com

This product is exclusively available under Proteintech Group brand and is not available to purchase from any other manufacturer.

Selected Validation Data



Immunofluorescent analysis of (4% PFA) fixed human tonsillitis tissue using CoraLite® Plus 488 IL-2 antibody (CL488-60306, Clone: 2F11C5) at dilution of 1:200.



Immunofluorescent analysis of (4% PFA) fixed human tonsillitis tissue using CoraLite® Plus 488 IL-2 antibody (CL488-60306, Clone: 2F11C5) at dilution of 1:200.