

For Research Use Only

CoraLite® Plus 488-conjugated Thyroglobulin Monoclonal antibody



Catalog Number: CL488-60272

Basic Information

Catalog Number: CL488-60272	GenBank Accession Number: BC140933	Purification Method: Protein A purification
Size: 1000 µg/ml	GeneID (NCBI): 7038	CloneNo.: 4D3C5
Source: Mouse	UNIPROT ID: P01266	Recommended Dilutions: IF 1:50-1:500
Isotype: IgG2a	Full Name: thyroglobulin	Excitation/Emission maxima wavelengths: 493 nm / 522 nm
Immunogen Catalog Number: AG18070	Calculated MW: 2768 aa, 305 kDa	

Applications

Tested Applications: IF-P	Positive Controls: IF : human thyroid cancer tissue,
Species Specificity: human	

Background Information

Thyroglobulin (Tg) is a glycoprotein homodimer produced predominantly by the thyroid gland. It acts as a substrate for the synthesis of thyroxine and triiodothyronine as well as the storage of the inactive forms of thyroid hormone and iodine. Thyroglobulin is secreted from the endoplasmic reticulum to its site of iodination, and subsequent thyroxine biosynthesis, in the follicular lumen. Mutations in this gene cause thyroid dyshormonogenesis, manifested as goiter, and are associated with moderate to severe congenital hypothyroidism. Polymorphisms in this gene are associated with susceptibility to autoimmune thyroid diseases (AITD) such as Graves disease and Hashimoto thyroiditis.

Storage

Storage:
Store at -20°C. Avoid exposure to light.
Storage Buffer:
PBS with 50% Glycerol, 0.05% Proclin300, 0.5% BSA, pH 7.3.
Aliquoting is unnecessary for -20°C storage

For technical support and original validation data for this product please contact:

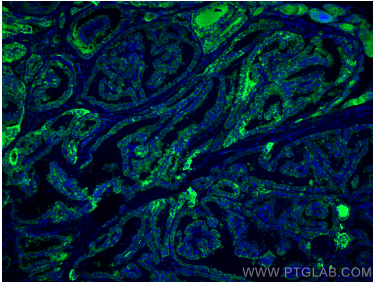
T: 4006900926

E: Proteintech-CN@ptglab.com

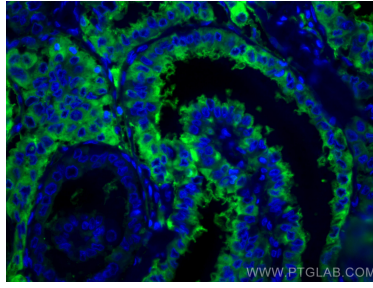
W: ptgcn.com

This product is exclusively available under Proteintech Group brand and is not available to purchase from any other manufacturer.

Selected Validation Data



Immunofluorescent analysis of (4% PFA) fixed human thyroid cancer tissue using CoraLite® Plus 488 Thyroglobulin antibody (CL488-60272, Clone: 4D3C5) at dilution of 1:200.



Immunofluorescent analysis of (4% PFA) fixed human thyroid cancer tissue using CoraLite® Plus 488 Thyroglobulin antibody (CL488-60272, Clone: 4D3C5) at dilution of 1:200.