

CoraLite® Plus 488-conjugated Napsin A Monoclonal antibody

Catalog Number: **CL488-60259**

Basic Information

Catalog Number: CL488-60259	GenBank Accession Number: BC017842	Purification Method: Protein G purification
Size: 1000 µg/ml	GeneID (NCBI): 9476	CloneNo.: 1H7F2
Source: Mouse	UNIPROT ID: O96009	Recommended Dilutions: IF/ICC 1:50-1:500
Isotype: IgG1	Full Name: napsin A aspartic peptidase	Excitation/Emission maxima wavelengths: 493 nm / 522 nm
Immunogen Catalog Number: AG9721	Calculated MW: 420 aa, 45 kDa	

Applications

Tested Applications: IF/ICC	Positive Controls: IF/ICC : HUVEC cells,
Species Specificity: human	

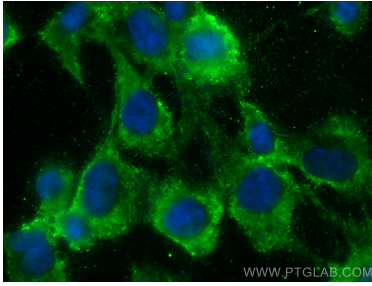
Background Information

Napsin is found in two isoforms, napsin A and B, with highly homologous nucleotide sequences (91.2%). Napsin A appears to be a functional proteinase, predominantly expressed in lung and kidney. Napsin B is transcribed exclusively in cells related to the immune system and lacks an in-frame stop codon and is believed to be a pseudogene.(PMID:12698189). Napsin A is superior to TTF-1 in distinguishing primary lung ACA from other carcinomas (except kidney), particularly primary lung small cell carcinoma, and primary thyroid carcinoma. (PMID:22288963).

Storage

Storage:
Store at -20°C. Avoid exposure to light. Stable for one year after shipment.
Storage Buffer:
PBS with 50% Glycerol, 0.05% Proclin300, 0.5% BSA, pH 7.3.
Aliquoting is unnecessary for -20°C storage

Selected Validation Data



Immunofluorescent analysis of (-20°C Methanol)
fixed HUVEC cells using Coralite® Plus 488 Napsin
A antibody (CL488-60259, Clone: 1H7F2) at
dilution of 1:200.