

For Research Use Only

# CoraLite® Plus 488-conjugated COTL1 Monoclonal antibody



Catalog Number: **CL488-60237**

1 Publications

## Basic Information

Catalog Number:

CL488-60237

Size:

1000 µg/ml

Source:

Mouse

Isotype:

IgG1

Immunogen Catalog Number:

AG1230

GenBank Accession Number:

BC010884

GeneID (NCBI):

23406

UNIPROT ID:

Q14019

Full Name:

coactosin-like 1 (Dictyostelium)

Calculated MW:

16 kDa

Observed MW:

16 kDa

Purification Method:

Protein G purification

CloneNo.:

4A3D9

Recommended Dilutions:

IF/ICC 1:50-1:500

Excitation/Emission maxima  
wavelengths:

493 nm / 522 nm

## Applications

Tested Applications:

IF/ICC

Cited Applications:

IF

Species Specificity:

human, mouse, pig

Cited Species:

human

Positive Controls:

IF/ICC : HepG2 cells,

## Background Information

COTL1, also named as CLP, binds to F-actin in a calcium-independent manner. And it has no direct effect on actin depolymerization.

## Notable Publications

Author	Pubmed ID	Journal	Application
Susana Lechuga	39040043	Front Cell Dev Biol	IF

## Storage

Storage:

Store at -20°C. Avoid exposure to light. Stable for one year after shipment.

Storage Buffer:

PBS with 50% Glycerol, 0.05% Proclin300, 0.5% BSA, pH 7.3.

Aliquoting is unnecessary for -20°C storage

For technical support and original validation data for this product please contact:

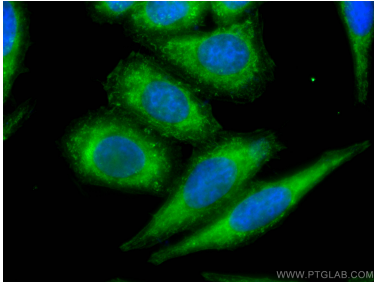
T: 4006900926

E: [Proteintech-CN@ptglab.com](mailto:Proteintech-CN@ptglab.com)

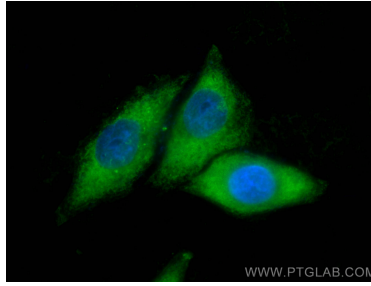
W: [ptgcn.com](http://ptgcn.com)

This product is exclusively available under Proteintech Group brand and is not available to purchase from any other manufacturer.

## Selected Validation Data



Immunofluorescent analysis of (-20°C Ethanol) fixed HepG2 cells using CoraLite® Plus 488-conjugated COTL1 antibody (CL488-60237, Clone: 4A3D9 ) at dilution of 1:100.



Immunofluorescent analysis of (-20°C Ethanol) fixed HepG2 cells using CoraLite® Plus 488 COTL1 antibody (CL488-60237, Clone: 4A3D9 ) at dilution of 1:200.