

For Research Use Only



CoraLite® Plus 488-conjugated Myosin Light Chain 2 Monoclonal antibody

Catalog Number: **CL488-60229**

Basic Information

Catalog Number: CL488-60229	GenBank Accession Number: BC015821	Purification Method: Protein G purification
Size: 1000 µg/ml	GeneID (NCBI): 4633	CloneNo.: 5A1F1
Source: Mouse	UNIPROT ID: P10916	Recommended Dilutions: IF 1:50-1:500
Isotype: IgG1	Full Name: myosin, light chain 2, regulatory, cardiac, slow	Excitation/Emission maxima wavelengths: 493 nm / 522 nm
Immunogen Catalog Number: AG1356	Calculated MW: 19 kDa	
	Observed MW: 18 kDa	

Applications

Tested Applications: IF/ICC	Positive Controls: IF : C2C12 cells,
Species Specificity: human, mouse, rat, pig	

Background Information

MYL2, also named as MLC-2v and MLC-2, is ventricular/cardiac muscle isoform. Defects in MYL2 are the cause of cardiomyopathy familial hypertrophic type 10 (CMH10). Defects in MYL2 are the cause of cardiomyopathy familial hypertrophic with mid-left ventricular chamber type 2 (MVC2). MYL2 has been widely used as a marker of mature ventricular cardiomyocytes.

Storage

Storage:
Store at -20°C. Avoid exposure to light. Stable for one year after shipment.
Storage Buffer:
PBS with 50% Glycerol, 0.05% Proclin300, 0.5% BSA, pH 7.3.
Aliquoting is unnecessary for -20°C storage

For technical support and original validation data for this product please contact:

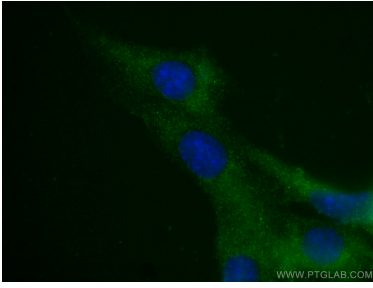
T: 4006900926

E: Proteintech-CN@ptglab.com

W: ptgcn.com

This product is exclusively available under Proteintech Group brand and is not available to purchase from any other manufacturer.

Selected Validation Data



Immunofluorescent analysis of (-20°C Ethanol) fixed C2C12 cells using CL488-60229 (Myosin Light Chain 2 antibody) at dilution of 1:50 .