

# CoraLite® Plus 488-conjugated Cytoglobin Monoclonal antibody

Catalog Number: **CL488-60228**

## Basic Information

### Catalog Number:

CL488-60228

### Size:

1000 µg/ml

### Source:

Mouse

### Isotype:

IgG1

### Immunogen Catalog Number:

AG4161

### GenBank Accession Number:

BC029798

### GeneID (NCBI):

114757

### UNIPROT ID:

Q8WWM9

### Full Name:

cytoglobin

### Calculated MW:

190 aa, 21 kDa

### Observed MW:

27-29 kDa

### Purification Method:

Protein G purification

### CloneNo.:

4C7E11

### Recommended Dilutions:

IF/ICC 1:50-1:500

### Excitation/Emission maxima wavelengths:

493 nm / 522 nm

## Applications

### Tested Applications:

IF/ICC

### Species Specificity:

human, mouse, pig, rat

### Positive Controls:

IF/ICC : HeLa cells,

## Background Information

Cytoglobin is a ubiquitously expressed hexacoordinate hemoglobin that may facilitate diffusion of oxygen through tissues. The protein, with calculated MW of 21 kDa, runs as a 29 kDa one in canine retina, kidney, liver, lung, and heart. It may be caused by posttranslational modification of the protein. Various immuno-staining patterns were reported including nuclear, cytoplasm and extracellular location.

## Storage

### Storage:

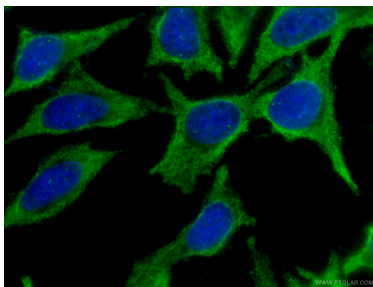
Store at -20°C. Avoid exposure to light. Stable for one year after shipment.

### Storage Buffer:

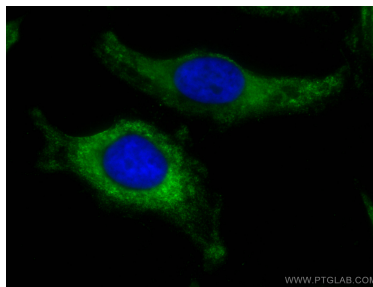
PBS with 50% Glycerol, 0.05% Proclin300, 0.5% BSA, pH 7.3.

Aliquoting is unnecessary for -20°C storage

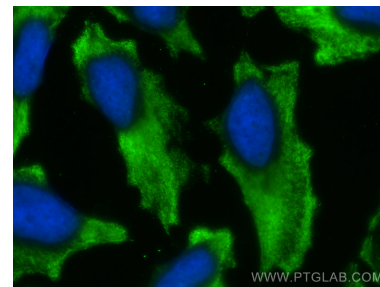
## Selected Validation Data



Immunofluorescent analysis of (-20°C Ethanol) fixed HeLa cells using CL488-60228 (Cytoglobin antibody) at dilution of 1:100. .



Immunofluorescent analysis of (-20°C Methanol) fixed HeLa cells using CoraLite® Plus 488 Cytoglobin antibody (CL488-60228, Clone: 4C7E11 ) at dilution of 1:200.



Immunofluorescent analysis of (-20°C Methanol) fixed HeLa cells using CoraLite® Plus 488 Cytoglobin antibody (CL488-60228, Clone: 4C7E11 ) at dilution of 1:200.