

For Research Use Only

# CoraLite® Plus 488-conjugated LYN Monoclonal antibody



Catalog Number:CL488-60211

## Basic Information

<b>Catalog Number:</b> CL488-60211	<b>GenBank Accession Number:</b> BC075002	<b>Purification Method:</b> Protein A purification
<b>Size:</b> 1000 µg/ml	<b>GeneID (NCBI):</b> 4067	<b>CloneNo.:</b> 3C7F2
<b>Source:</b> Mouse	<b>UNIPROT ID:</b> P07948	<b>Recommended Dilutions:</b> IF 1:50-1:500
<b>Isotype:</b> IgG2a	<b>Full Name:</b> v-src-1 Yamaguchi sarcoma viral related oncogene homolog	<b>Excitation/Emission maxima wavelengths:</b> 493 nm / 522 nm
<b>Immunogen Catalog Number:</b> AG12723	<b>Calculated MW:</b> 512 aa, 59 kDa	
	<b>Observed MW:</b> 56 kDa	

## Applications

<b>Tested Applications:</b> FC (Intra), IF/ICC	<b>Positive Controls:</b> IF : HepG2 cells,
<b>Species Specificity:</b> human, mouse	

## Background Information

LYN, also named as JTK8, p53Lyn and p56Lyn, belongs to the protein kinase superfamily, Tyr protein kinase family and SRC subfamily. It is a non-receptor tyrosine-protein kinase that transmits signals from cell surface receptors and plays an important role in the regulation of innate and adaptive immune responses, hematopoiesis, responses to growth factors and cytokines, integrin signaling, but also responses to DNA damage and genotoxic agents. LYN is a component of the mTOR (mammalian target of rapamycin) pathway.

## Storage

**Storage:**  
Store at -20°C. Avoid exposure to light. Stable for one year after shipment.  
**Storage Buffer:**  
PBS with 50% Glycerol, 0.05% Proclin300, 0.5% BSA, pH 7.3.  
Aliquoting is unnecessary for -20°C storage

For technical support and original validation data for this product please contact:

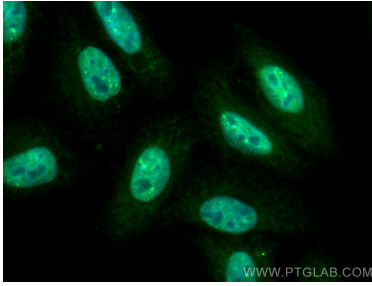
T: 4006900926

E: [Proteintech-CN@ptglab.com](mailto:Proteintech-CN@ptglab.com)

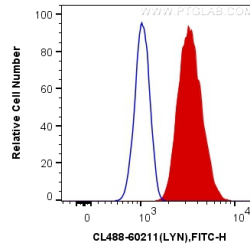
W: [ptgcn.com](http://ptgcn.com)

**This product is exclusively available under Proteintech Group brand and is not available to purchase from any other manufacturer.**

## Selected Validation Data



Immunofluorescent analysis of (4% PFA) fixed HepG2 cells using CoraLite® Plus 488 LYN antibody (CL488-60211, Clone: 3C7F2) at dilution of 1:200.



1X10<sup>6</sup> Ramos cells were intracellularly stained with 0.8 ug CoraLite® Plus 488 Anti-Human LYN (CL488-60211, Clone:3C7F2) (red), or 0.8 ug Mouse IgG2a Isotype Control (CL488-66360-2, Clone: K11A1B2A2) (blue). Cells were fixed and permeabilized with Transcription Factor Staining Buffer Kit (PF00011).