

For Research Use Only

CoraLite® Plus 488-conjugated SNAP25 Monoclonal antibody



Catalog Number: CL488-60159

Basic Information

Catalog Number: CL488-60159	GenBank Accession Number: BC010647	Purification Method: Protein A purification
Size: 1000 µg/ml	GeneID (NCBI): 6616	CloneNo.: 3E4B7
Source: Mouse	UNIPROT ID: P60880	Recommended Dilutions: WB 1:1000-1:4000 IF 1:50-1:500
Isotype: IgG2b	Full Name: synaptosomal-associated protein, 25kDa	Excitation/Emission maxima wavelengths: 493 nm / 522 nm
Immunogen Catalog Number: AG6695	Calculated MW: 23 kDa	
	Observed MW: 25 kDa	

Applications

Tested Applications: IF/ICC, WB	Positive Controls:
Species Specificity: human, mouse, rat	WB : mouse brain tissue, rat brain tissue IF : PC-12 cells,

Background Information

The synaptosomal associated protein of 25 kD (SNAP-25) was first identified as a major synaptic protein by Wilson and colleagues. The protein interacts with syntaxin and synaptobrevin through its N-terminal and C-terminal -helical domains. Its palmitoylation domain is located in the middle of the molecule that contains four cysteine residues. Mutation of the cysteines abolishes palmitoylation and membrane binding. Several elegant studies using synaptosome preparations and permeabilized PC12 cells have suggested that SNAP-25 may act in the late post-docking steps of exocytosis. By limited proteolysis and in vitro binding assay, it is proposed that the two helix domains act independently and contribute equally to form the SNARE complex with syntaxin and synaptobrevin. It seems that a major regulatory element is located in the C-terminus of SNAP-25. Removing a 9 amino acid sequence of SNAP-25 inhibited neurosecretion in chromaffin cells. In addition, it has been shown that inhibition of neurosecretion by botulinum toxin E can be rescued by a SNAP-25 C-terminal peptide, probably by initiating the formation of a fusion competent SNARE complex.

Storage

Storage:
Store at -20°C. Avoid exposure to light. Stable for one year after shipment.
Storage Buffer:
PBS with 50% Glycerol, 0.05% Proclin300, 0.5% BSA, pH 7.3.
Aliquoting is unnecessary for -20°C storage

For technical support and original validation data for this product please contact:

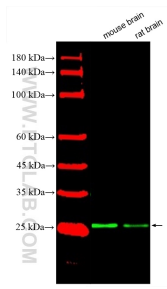
T: 4006900926

E: Proteintech-CN@ptglab.com

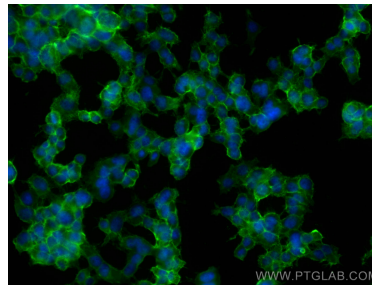
W: ptgcn.com

This product is exclusively available under Proteintech Group brand and is not available to purchase from any other manufacturer.

Selected Validation Data



Various lysates were subjected to SDS PAGE followed by western blot with CL488-60159 (SNAP25 antibody) at dilution of 1:2000 incubated at room temperature for 1.5 hours.



Immunofluorescent analysis of (-20°C Ethanol) fixed PC-12 cells using CoraLite® Plus 488 SNAP25 antibody (CL488-60159, Clone: 3E4B7) at dilution of 1:200.