

For Research Use Only

CoraLite® Plus 488-conjugated CD206 Monoclonal antibody



Catalog Number: **CL488-60143** **4 Publications**

Basic Information

Catalog Number: CL488-60143	GenBank Accession Number: NM_002438	Purification Method: Protein A purification
Size: 1000 µg/ml	GeneID (NCBI): 4360	CloneNo.: 2A6A10
Source: Mouse	UNIPROT ID: P22897	Recommended Dilutions: IF 1:50-1:500
Isotype: IgG2a	Full Name: mannose receptor, C type 1	Excitation/Emission maxima wavelengths: 493 nm / 522 nm
	Calculated MW: 166 kDa	

Applications

Tested Applications: IF-P	Positive Controls: IF : human lung cancer tissue,
Cited Applications: IF	
Species Specificity: human	
Cited Species: human	

Background Information

CD206, also named as MMR, CLEC13D and MRC1, is a type I membrane receptor that mediates the endocytosis of glycoproteins by macrophages. CD206 has been shown to bind high-mannose structures on the surface of potentially pathogenic viruses, bacteria, and fungi so that they can be neutralized by phagocytic engulfment. CD206 is a 170 kDa transmembrane protein which contains 5 domains: an amino-terminal cysteine-rich region, a fibronectin type II repeat, a series of eight tandem lectin-like carbohydrate recognition domains (responsible for the recognition of mannose and fucose), a transmembrane domain, and an intracellular carboxy-terminal tail. It is expressed on most tissue macrophages, in vitro derived dendritic cells, lymphatic and sinusoidal endothelia. This antibody is conjugated with CL488, Ex/Em 488 nm/515 nm.

Notable Publications

Author	Pubmed ID	Journal	Application
Jia-Bin Wang	35999359	Cancer Gene Ther	IF
Dongsheng Guan	37431183	Acta Biochim Biophys Sin (Shanghai)	IF
Yang Liu	37267693	Phytomedicine	IF

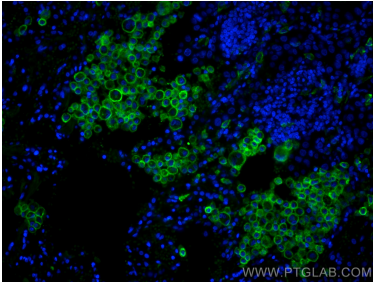
Storage

Storage:
Store at -20°C. Avoid exposure to light. Stable for one year after shipment.
Storage Buffer:
PBS with 50% Glycerol, 0.05% Proclin300, 0.5% BSA, pH 7.3.
Aliquoting is unnecessary for -20°C storage

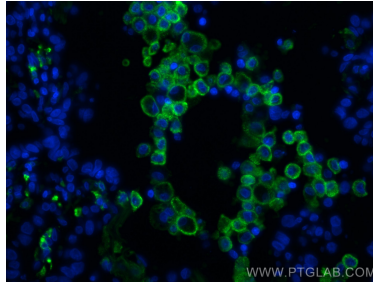
For technical support and original validation data for this product please contact:
T: 4006900926 E: Proteintech-CN@ptglab.com W: ptgcn.com

This product is exclusively available under Proteintech Group brand and is not available to purchase from any other manufacturer.

Selected Validation Data



Immunofluorescent analysis of (4% PFA) fixed human lung cancer tissue using CoraLite® Plus 488 CD206 antibody (CL488-60143, Clone: 2A6A10) at dilution of 1:200.



Immunofluorescent analysis of (4% PFA) fixed human lung cancer tissue using CoraLite® Plus 488 CD206 antibody (CL488-60143, Clone: 2A6A10) at dilution of 1:200.