

CoraLite® Plus 488-conjugated Chromogranin A Monoclonal antibody

Catalog Number: **CL488-60135**

Basic Information

Catalog Number:

CL488-60135

Size:

1000 µg/ml

Source:

Mouse

Isotype:

IgG1

Immunogen Catalog Number:

AG0807

GenBank Accession Number:

BC006459

GeneID (NCBI):

1113

UNIPROT ID:

P10645

Full Name:chromogranin A (parathyroid
secretory protein 1)**Calculated MW:**

51 kDa

Observed MW:

70 kDa

Purification Method:

Protein G purification

CloneNo.:

3H11C11

Recommended Dilutions:

IF/ICC 1:50-1:500

**Excitation/Emission maxima
wavelengths:**

493 nm / 522 nm

Applications

Tested Applications:

IF/ICC, FC (Intra)

Species Specificity:

human, mouse, rat, pig

Positive Controls:

IF/ICC : PC-12 cells, SH-SY5Y cells, Neuro-2a cells

Background Information

Chromogranin A is a member of the granin family of neuroendocrine secretory proteins. It is located in secretory vesicles of neurons and endocrine cells. Chromogranin A is the precursor to several functional peptides including vasostatin, pancreastatin, catestatin and parastatin. These peptides negatively modulate the neuroendocrine function of the releasing cell (autocrine) or nearby cells (paracrine). CgA is one of the most used tumor markers in NET's (neuroendocrine tumors), and elevated CgA concentrations have been demonstrated in serum or plasma of patients with different types of these tumors.

Storage

Storage:

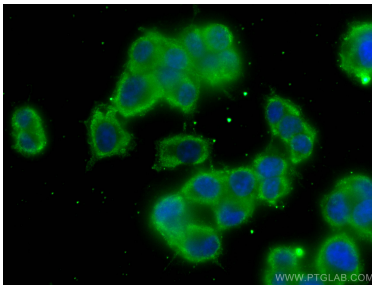
Store at -20°C. Avoid exposure to light. Stable for one year after shipment.

Storage Buffer:

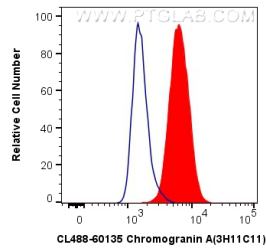
PBS with 50% Glycerol, 0.05% Proclin300, 0.5% BSA, pH 7.3.

Aliquoting is unnecessary for -20°C storage

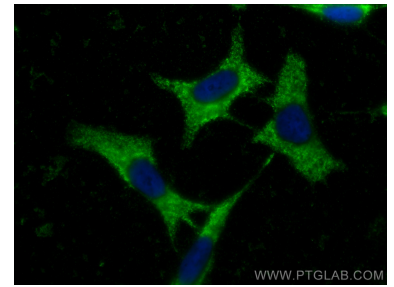
Selected Validation Data



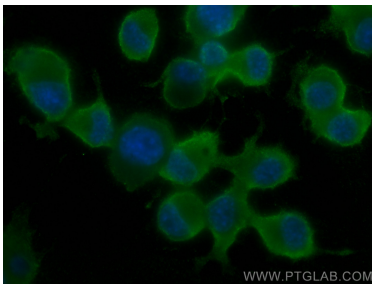
Immunofluorescent analysis of (-20°C Ethanol) fixed PC-12 cells using Coralite® Plus 488 Chromogranin A antibody (CL488-60135, Clone: 3H11C11) at dilution of 1:200.



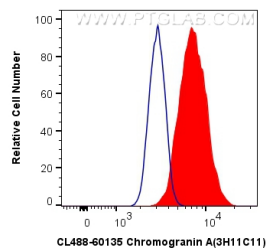
1X10⁶ SH-SY5Y cells were intracellularly stained with 0.8 ug Coralite® Plus 488 Anti-Human Chromogranin A (CL488-60135, Clone:3H11C11) (red), or 0.8 ug Control Antibody. Cells were fixed with 4% PFA and permeabilized with Flow Cytometry Perm Buffer (PF00011-C).



Immunofluorescent analysis of (-20°C Ethanol) fixed SH-SY5Y cells using Coralite® Plus 488 Chromogranin A antibody (CL488-60135, Clone: 3H11C11) at dilution of 1:200.



Immunofluorescent analysis of (4% PFA) fixed Neuro-2a cells using Coralite® Plus 488 Chromogranin A antibody (CL488-60135, Clone: 3H11C11) at dilution of 1:200.



1X10⁶ Neuro-2a cells were intracellularly stained with 0.8 ug Coralite® Plus 488 Anti-Human Chromogranin A (CL488-60135, Clone:3H11C11) (red), or 0.8 ug Control Antibody. Cells were fixed with 4% PFA and permeabilized with Flow Cytometry Perm Buffer (PF00011-C).