

CoraLite® Plus 488-conjugated SERPINA10 Monoclonal antibody

Catalog Number: **CL488-60113**

Basic Information

Catalog Number:

CL488-60113

Size:

1000 µg/ml

Source:

Mouse

Isotype:

IgG2a

Immunogen Catalog Number:

AG2420

GenBank Accession Number:

BC022261

GeneID (NCBI):

51156

UNIPROT ID:

Q9UK55

Full Name:

serpin peptidase inhibitor, clade A
(alpha-1 antiproteinase, antitrypsin),
member 10

Calculated MW:

444 aa, 51 kDa

Purification Method:

Protein A purification

CloneNo.:

5B3C9

Recommended Dilutions:

IF/ICC 1:50-1:500

Excitation/Emission maxima
wavelengths:

493 nm / 522 nm

Applications

Tested Applications:

IF/ICC

Species Specificity:

human, rat, pig

Positive Controls:

IF/ICC : HepG2 cells,

Background Information

SERPINA10 belongs to the serpin family. It is predominantly expressed in the liver and secreted in plasma. It inhibits the activity of coagulation factors Xa and XIa in the presence of protein Z, calcium and phospholipid. Mutations in this gene are associated with venous thrombosis.

Storage

Storage:

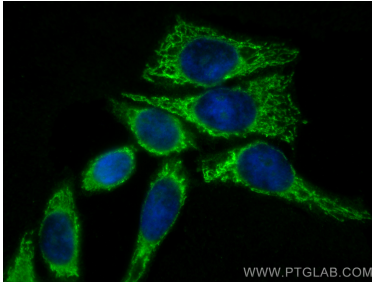
Store at -20°C. Avoid exposure to light. Stable for one year after shipment.

Storage Buffer:

PBS with 50% Glycerol, 0.05% Proclin300, 0.5% BSA, pH 7.3.

Aliquoting is unnecessary for -20°C storage

Selected Validation Data



Immunofluorescent analysis of (-20°C Ethanol)
fixed HepG2 cells using CoraLite® Plus 488
SERPINA10 antibody (CL488-60113, Clone: 5B3C9)
at dilution of 1:200.