

For Research Use Only

# CoraLite® Plus 488-conjugated EEF1D Monoclonal antibody



Catalog Number: CL488-60085

## Basic Information

Catalog Number:

CL488-60085

Size:

2000 µg/ml

Source:

Mouse

Isotype:

IgG1

Immunogen Catalog Number:

AG0983

GenBank Accession Number:

BC007847

GeneID (NCBI):

1936

UNIPROT ID:

P29692

Full Name:

eukaryotic translation elongation  
factor 1 delta (guanine nucleotide  
exchange protein)

Calculated MW:

31 kDa

Observed MW:

35-40 kDa

Purification Method:

Protein G purification

CloneNo.:

3B1B11

Recommended Dilutions:

IF 1:50-1:500

Excitation/Emission maxima  
wavelengths:

493 nm / 522 nm

## Applications

Tested Applications:

FC (Intra), IF/ICC

Species Specificity:

human, mouse, rat

Positive Controls:

IF : HepG2 cells, HeLa cells

## Background Information

EEF1D, also named as EF1D and EF 1 delta, belongs to the EF-1-beta/EF-1-delta family. It is a subunit of the elongation factor-1 complex, which is responsible for the enzymatic delivery of aminoacyl tRNAs to the ribosome. EF-1-beta and EF-1-delta stimulate the exchange of GDP bound to EF-1-alpha to GTP. EEF1D is phosphorylated upon DNA damage, probably by ATM or ATR. The calculated molecular weight of EEF1D is a 31 kDa, but the modified protein is about 35-40 kDa. ( PMID: 21936567 )

## Storage

Storage:

Store at -20°C. Avoid exposure to light. Stable for one year after shipment.

Storage Buffer:

PBS with 50% Glycerol, 0.05% Proclin300, 0.5% BSA, pH 7.3.

Aliquoting is unnecessary for -20°C storage

For technical support and original validation data for this product please contact:

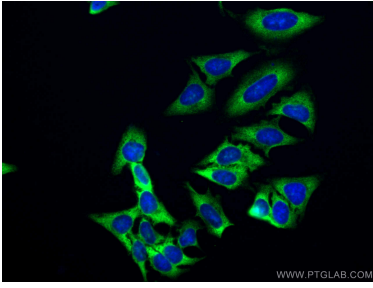
T: 4006900926

E: [Proteintech-CN@ptglab.com](mailto:Proteintech-CN@ptglab.com)

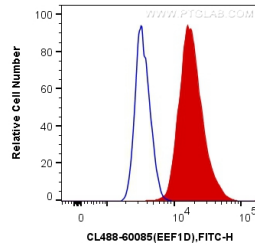
W: [ptgcn.com](http://ptgcn.com)

This product is exclusively available under Proteintech Group brand and is not available to purchase from any other manufacturer.

## Selected Validation Data



Immunofluorescent analysis of (-20°C Ethanol) fixed HepG2 cells using the CoraLite® Plus 488-conjugated version of this antibody, CL488-60085 (EEF1D antibody), at dilution of 1:100.



1X10<sup>6</sup> MCF-7 cells were intracellularly stained with 0.4 ug CoraLite® Plus 488 Anti-Human EEF1D (CL488-60085, Clone:3B1B11) (red), or 0.4 ug Mouse IgG1 Isotype Control (CL488-66360, Clone: T1F8D3F10) (blue). Cells were fixed with 4% PFA and permeabilized with Flow Cytometry Perm Buffer (PF00011-C).