

For Research Use Only

CoraLite® Plus 488-conjugated GDI2 Monoclonal antibody



Catalog Number: CL488-60078

Basic Information

Catalog Number:

CL488-60078

Size:

1000 µg/ml

Source:

Mouse

Isotype:

IgG1

Immunogen Catalog Number:

AG4613

GenBank Accession Number:

BC005145

GeneID (NCBI):

2665

UNIPROT ID:

P50395

Full Name:

GDP dissociation inhibitor 2

Calculated MW:

47 kDa

Observed MW:

46 kDa

Purification Method:

Protein G purification

CloneNo.:

4B8F3

Recommended Dilutions:

IF 1:50-1:500

Excitation/Emission maxima

wavelengths:

493 nm / 522 nm

Applications

Tested Applications:

IF/ICC

Species Specificity:

human, mouse

Positive Controls:

IF : HeLa cells,

Background Information

GDP dissociation inhibitors (GDIs) are proteins that regulate the GDP-GTP exchange reaction of members of the rab family, GDIs can bind and release GDP-bound Rab proteins from membranes. Two GDI proteins towards different Rab proteins have been identified. GDI 1 interacts with almost all of the Rab proteins, while GDI2 interacts with Rab11 but not Rab3A. GDI2 distributes ubiquitously, displaying a membrane bound location in perinuclear regions of cells. GDI-2 was thought to be involved in cellular response to insulin. It electrophoreses as a 46kd protein in SDS-PAGE. (PMID: 7929030; PMID: 19570034). This antibody can bind both GDIs for the close sequences.

Storage

Storage:

Store at -20°C. Avoid exposure to light. Stable for one year after shipment.

Storage Buffer:

PBS with 50% Glycerol, 0.05% Proclin300, 0.5% BSA, pH 7.3.

Aliquoting is unnecessary for -20°C storage

For technical support and original validation data for this product please contact:

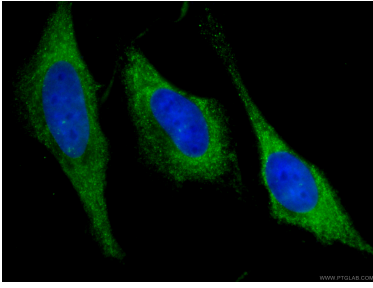
T: 4006900926

E: Proteintech-CN@ptglab.com

W: ptgcn.com

This product is exclusively available under Proteintech Group brand and is not available to purchase from any other manufacturer.

Selected Validation Data



Immunofluorescent analysis of (-20°C Ethanol) fixed HeLa cells using CL488-60078 (GDI2 antibody) at dilution of 1:100.