

CoraLite® Plus 488-conjugated Transgelin 2 Monoclonal antibody

Catalog Number: CL488-60044

Featured Product

Basic Information

Catalog Number:

CL488-60044

Size:

1000 µg/ml

Source:

Mouse

Isotype:

IgG1

Immunogen Catalog Number:

AG0337

GenBank Accession Number:

BC002616

GeneID (NCBI):

8407

UNIPROT ID:

P37802

Full Name:

transgelin 2

Calculated MW:

199 aa, 22 kDa

Observed MW:

22 kDa

Purification Method:

Protein G purification

CloneNo.:

2E5G1

Recommended Dilutions:

IF-P 1:50-1:500

IF/ICC 1:50-1:500

**Excitation/Emission maxima
wavelengths:**

493 nm / 522 nm

Applications

Tested Applications:

IF/ICC, IF-P

Species Specificity:

human, mouse

Positive Controls:

IF-P : human colon cancer tissue,

IF/ICC : HepG2 cells,

Background Information

The transgelin family is a group of proteins that belong to 22 kDa actin-related corpnin superfamily. Of all three isoforms, transgelin 1 is the best characterized. Transgelin 1, also known as SM22 alpha, is a specific marker for differentiated smooth muscle cells. Transgelin 2, also known as SM22 beta, is expressed by both smooth muscle and non-smooth muscle cells in a temporally and spatially regulated pattern. Transgelin 3, also known as NP25, is only found in highly differentiated neuronal cells. Our test result showed that this antibody is specific to TAGLN2. It does not bind TAGLN1 and TAGLN3.

Storage

Storage:

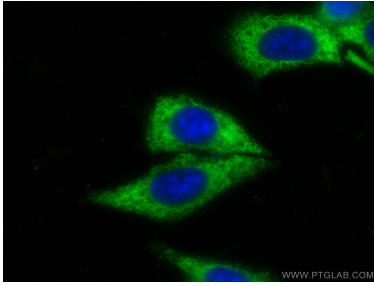
Store at -20°C. Avoid exposure to light. Stable for one year after shipment.

Storage Buffer:

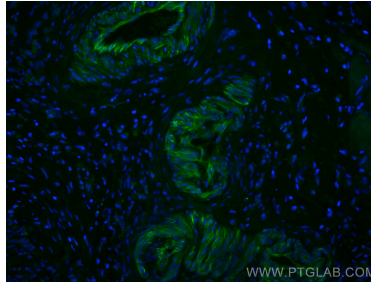
PBS with 50% Glycerol, 0.05% Proclin300, 0.5% BSA, pH 7.3.

Aliquoting is unnecessary for -20°C storage

Selected Validation Data



Immunofluorescent analysis of (-20°C Ethanol) fixed HepG2 cells using CoraLite® Plus 488 Transgelin 2 antibody (CL488-60044, Clone: 2E5G1) at dilution of 1:200.



Immunofluorescent analysis of (4% PFA) fixed human colon cancer tissue using CoraLite® Plus 488 Transgelin 2 antibody (CL488-60044, Clone: 2E5G1) at dilution of 1:200.