

For Research Use Only

# CoraLite® Plus 488-conjugated NOTCH3 Polyclonal antibody



Catalog Number: CL488-55114

Featured Product

## Basic Information

Catalog Number:

CL488-55114

Size:

1000 µg/ml

Source:

Rabbit

Isotype:

IgG

GenBank Accession Number:

NM\_000435

GeneID (NCBI):

4854

UNIPROT ID:

Q9UM47

Full Name:

Notch homolog 3 (Drosophila)

Calculated MW:

244 kDa

Observed MW:

250-260 kDa, 100 kDa

Purification Method:

Antigen affinity purification

Excitation/Emission maxima  
wavelengths:

493 nm / 522 nm

## Applications

Tested Applications:

FC (Intra)

Species Specificity:

human, mouse

## Background Information

NOTCH3 belongs to the NOTCH family. It functions as a receptor for membrane-bound ligands Jagged1, Jagged2 and Delta1 to regulate cell-fate determination. Upon ligand activation through the released notch intracellular domain (NICD) it forms a transcriptional activator complex with RBP-J kappa and activates genes of the enhancer of split locus. NOTCH3 affects the implementation of differentiation, proliferation and apoptotic programs. Defects in NOTCH3 are the cause of cerebral autosomal dominant arteriopathy with subcortical infarcts and leukoencephalopathy (CADASIL). The antibody is specific to NOTCH3. Notch3 is a single-pass type I membrane protein exposed at the cell surface as a heterodimer of 2321 amino acids. It is synthesized as a precursor with a molecular weight of ~280 kDa (Notch3 full-length), which is cleaved (S1 cleavage) into a 210 kDa extracellular fragment and a 97 kDa intracellular fragment (PMID: 21702048).

## Storage

Storage:

Store at -20°C. Avoid exposure to light. Stable for one year after shipment.

Storage Buffer:

PBS with 50% Glycerol, 0.05% Proclin300, 0.5% BSA, pH 7.3.

Aliquoting is unnecessary for -20°C storage

For technical support and original validation data for this product please contact:

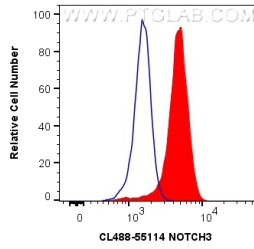
T: 4006900926

E: [Proteintech-CN@ptglab.com](mailto:Proteintech-CN@ptglab.com)

W: [ptgcn.com](http://ptgcn.com)

This product is exclusively available under Proteintech Group brand and is not available to purchase from any other manufacturer.

## Selected Validation Data



1X10<sup>6</sup> Jurkat cells were intracellularly stained with 0.4 ug CoraLite® Plus 488 Anti-Human NOTCH3 (CL488-55114) (red), or 0.4 ug CoraLite® Plus 488-conjugated Rabbit IgG control Rabbit PolyAb (CL488-30000, Clone: ) (blue). Cells were fixed with 4% PFA and permeabilized with Flow Cytometry Perm Buffer (PF00011-C).