

For Research Use Only

# CoraLite® Plus 488-conjugated WNT8A Polyclonal antibody



Catalog Number: **CL488-30518**

## Basic Information

Catalog Number:

CL488-30518

Size:

1000 µg/ml

Source:

Rabbit

Isotype:

IgG

Immunogen Catalog Number:

AG29510

GenBank Accession Number:

NM\_001300938

GeneID (NCBI):

7478

UNIPROT ID:

Q9H1J5

Full Name:

wingless-type MMTV integration site family, member 8A

Calculated MW:

39 kDa

Observed MW:

39-45 kDa

Purification Method:

Antigen affinity purification

Recommended Dilutions:

IF/ICC 1:50-1:500

Excitation/Emission maxima wavelengths:

493 nm / 522 nm

## Applications

Tested Applications:

IF/ICC

Species Specificity:

Human, rat

Positive Controls:

IF/ICC : HCT 116 cells,

## Background Information

WNT8A, also named as WNT8D, belongs to the Wnt family of secreted signaling proteins. It is a ligand for members of the frizzled family of seven transmembrane receptors. These have been implicated in oncogenesis and in several developmental processes, including regulation of cell fate and patterning during embryogenesis. WNT8A may play an important role in the development and differentiation of certain forebrain structures, notably the hippocampus.

## Storage

Storage:

Store at -20°C. Avoid exposure to light. Stable for one year after shipment.

Storage Buffer:

PBS with 50% Glycerol, 0.05% Proclin300, 0.5% BSA, pH 7.3.

Aliquoting is unnecessary for -20°C storage

For technical support and original validation data for this product please contact:

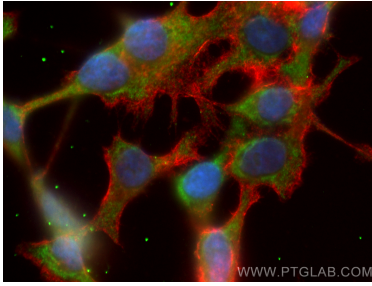
T: 4006900926

E: [Proteintech-CN@ptglab.com](mailto:Proteintech-CN@ptglab.com)

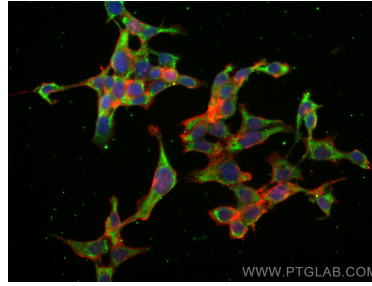
W: [ptgcn.com](http://ptgcn.com)

This product is exclusively available under Proteintech Group brand and is not available to purchase from any other manufacturer.

## Selected Validation Data



Immunofluorescent analysis of (-20°C Ethanol) fixed HCT 116 cells using CoraLite® Plus 488 WNT8A antibody (CL488-30518) at dilution of 1:200, CL594-Phalloidin (red).



Immunofluorescent analysis of (-20°C Ethanol) fixed HCT 116 cells using CoraLite® Plus 488 WNT8A antibody (CL488-30518) at dilution of 1:200, CL594-Phalloidin (red).