

For Research Use Only

# CoraLite® Plus 488-conjugated EGFR Polyclonal antibody

Catalog Number: CL488-30139



## Basic Information

Catalog Number:

CL488-30139

Concentration:

1000 ug/ml

Source:

Rabbit

Isotype:

IgG

GenBank Accession Number:

NM\_005228.5

GeneID (NCBI):

1956

UNIPROT ID:

P00533

Full Name:

epidermal growth factor receptor  
(erythroblastic leukemia viral (v-erb-  
b) oncogene homolog, avian)

Calculated MW:

134kd

Observed MW:

145-165 kDa

Purification Method:

Antigen affinity purification

Recommended Dilutions:

IF/ICC 1:50-1:500

Excitation/Emission maxima  
wavelengths:

493 nm / 522 nm

## Applications

Tested Applications:

IF/ICC, FC

Species Specificity:

human

Positive Controls:

IF/ICC : A431 cells, HaCaT cells

## Background Information

EGFR is a receptor for EGF, but also for other members of the EGF family, as TGF- $\alpha$ , amphiregulin, betacellulin, heparin-binding EGF-like growth factor, GP30 and vaccinia virus growth factor. ERBB1 is involved in the control of cell growth and differentiation. Phosphorylates MUC1 in breast cancer cells and increases the interaction of MUC1 with C-SRC and CTNNB1/beta-catenin. Isoform 2/truncated isoform of ERBB1 may act as an antagonist. EGFR is associated with lung cancer.

## Storage

Storage:

Store at -20°C. Avoid exposure to light. Stable for one year after shipment.

Storage Buffer:

PBS with 50% Glycerol, 0.05% Proclin300, 0.5% BSA, pH 7.3.

Aliquoting is unnecessary for -20°C storage

For technical support and original validation data for this product please contact:

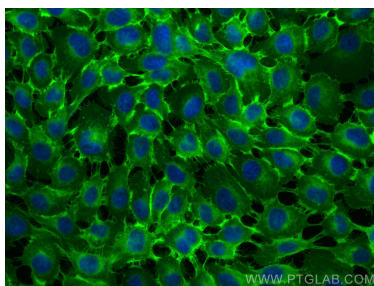
T: 4006900926

E: [Proteintech-CN@ptglab.com](mailto:Proteintech-CN@ptglab.com)

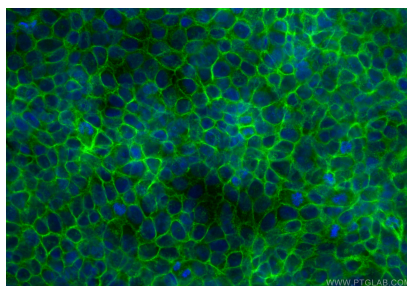
W: [ptgcn.com](http://ptgcn.com)

This product is exclusively available under Proteintech Group brand and is not available to purchase from any other manufacturer.

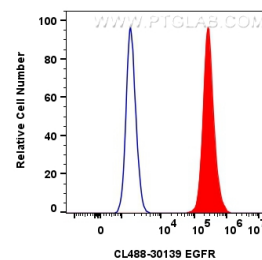
## Selected Validation Data



Immunofluorescent analysis of (-20°C Methanol) fixed A431 cells using CoraLite® Plus 488 EGFR antibody (CL488-30139) at dilution of 1:200.



Immunofluorescent analysis of (-20°C Methanol) fixed HaCaT cells using CoraLite® Plus 488 EGFR antibody (CL488-30139) at dilution of 1:200.



1x10<sup>6</sup> A431 cells were surface stained with 0.4 ug CoraLite® Plus 488 EGFR Polyclonal Antibody (CL488-30139)(red), or 0.4 ug CoraLite® Plus 488-conjugated Rabbit IgG control Rabbit PolyAb (CL488-30000) (blue). Cells were not fixed.