

For Research Use Only

CoraLite® Plus 488-conjugated Parvalbumin Polyclonal antibody



Catalog Number: **CL488-29312**

Basic Information

Catalog Number:

CL488-29312

Size:

1000 µg/ml

Source:

Rabbit

Isotype:

IgG

Immunogen Catalog Number:

AG30189

GenBank Accession Number:

NM_002854

GeneID (NCBI):

5816

UNIPROT ID:

P20472

Full Name:

parvalbumin

Calculated MW:

12 kDa

Purification Method:

Antigen affinity purification

Recommended Dilutions:

IF-P 1:50-1:500

Excitation/Emission maxima wavelengths:

493 nm / 522 nm

Applications

Tested Applications:

IF-P

Species Specificity:

human, mouse, rat

Positive Controls:

IF-P : mouse cerebellum tissue,

Background Information

PVALB is a high affinity calcium ion-binding protein that is structurally and functionally similar to calmodulin and troponin C. PVALB is expressed in high levels only in fast-contracting muscles and at lower levels in brain and several endocrine tissues. It is thought to be involved in muscle relaxation.

Storage

Storage:

Store at -20°C. Avoid exposure to light. Stable for one year after shipment.

Storage Buffer:

PBS with 50% Glycerol, 0.05% Proclin300, 0.5% BSA, pH 7.3.

Aliquoting is unnecessary for -20°C storage

For technical support and original validation data for this product please contact:

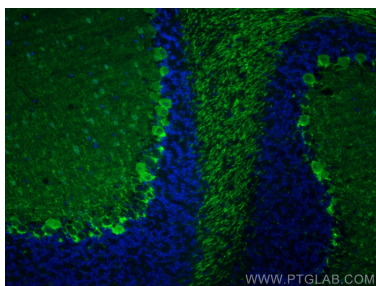
T: 4006900926

E: Proteintech-CN@ptglab.com

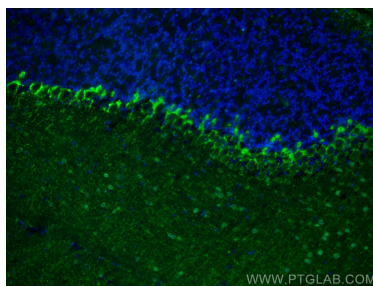
W: ptgcn.com

This product is exclusively available under Proteintech Group brand and is not available to purchase from any other manufacturer.

Selected Validation Data



Immunofluorescent analysis of (4% PFA) fixed mouse cerebellum tissue using Coralite® Plus 488 Parvalbumin antibody (CL488-29312) at dilution of 1:200.



Immunofluorescent analysis of (4% PFA) fixed mouse cerebellum tissue using Coralite® Plus 488 Parvalbumin antibody (CL488-29312) at dilution of 1:200.