

For Research Use Only

CoraLite® Plus 488-conjugated PRKDC Polyclonal antibody



Catalog Number: CL488-28534

Basic Information

Catalog Number:

CL488-28534

Size:

1000 µg/ml

Source:

Rabbit

Isotype:

IgG

Immunogen Catalog Number:

AG29100

GenBank Accession Number:

NM_006904

GeneID (NCBI):

5591

UNIPROT ID:

P78527

Full Name:

protein kinase, DNA-activated,
catalytic polypeptide

Calculated MW:

469 kDa

Observed MW:

350-460 kDa

Purification Method:

Antigen affinity purification

Recommended Dilutions:

IF 1:50-1:500

Excitation/Emission maxima
wavelengths:

493 nm / 522 nm

Applications

Tested Applications:

IF/ICC

Species Specificity:

Human

Positive Controls:

IF : HeLa cells,

Background Information

Storage

Storage:

Store at -20°C. Avoid exposure to light. Stable for one year after shipment.

Storage Buffer:

PBS with 50% Glycerol, 0.05% Proclin300, 0.5% BSA, pH 7.3.

Aliquoting is unnecessary for -20°C storage

For technical support and original validation data for this product please contact:

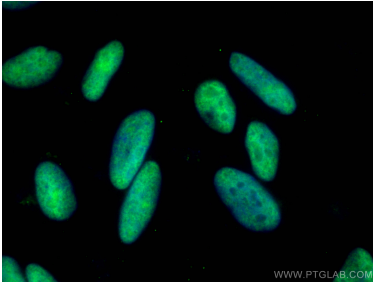
T: 4006900926

E: Proteintech-CN@ptglab.com

W: ptgcn.com

This product is exclusively available under Proteintech Group brand and is not available to purchase from any other manufacturer.

Selected Validation Data



Immunofluorescent analysis of (4% PFA) fixed HeLa cells using CoraLite® Plus 488 PRKDC antibody (CL488-28534) at dilution of 1:100.